



Trick Tools™

High Performance Tools for the Fabricator

2012



1-877-VAN-SANT

3 - 5

ANGLE FINDERS & LEVELS

Digital Smart Tool · Dial Levels · Bend Protractors · Angle Finders · Plane-Of-Bend Indicator · Torpedo Levels · Digital Protractors · Fractional Calipers



6 - 9

SAWS

Circular Cold Saws · Portable Metal Cutting Saws · Horizontal Band Saws · Mag Brush · Mitering Band Saws · Vertical Band Saws



10 - 13

IRON WORKERS & PRESSES

Ironworkers · Multi-Shear · Pro Hand Press · Hand Notcher · Tooling Sets · Dimple Dies · Louver Press



14 - 15

PUNCHING & DRILLING

Sheet Metal Cutters · Drilling Jigs · Hand Punches · Punch & Flare Tools



16 - 19

BRAKES & SHEARS

Throatless Shear · Hand Brakes · Box & Pan Brakes · Kick Shears · Manual & Hydraulic Shears



20 - 25

METAL SHAPING

English Wheels · Planishing Hammers · Shrinker/Stretchers · Metal Shaping Tools · Tapered and Straight T-Dollies · Educational Books and Videos



26 - 27

GRINDING & SANDING

Multitool · Belt Grinders · Combination Belt & Disc Grinders · RadiusMaster



28 - 29

WELDING ACCESSORIES

Variable Angle Clamps · Fixed Angle Clamps · Tab and Bracket Holders · Rotary Welding Positioners · Magnetic Welding Positioners



30 - 33

BEAD FORM TOOLS

Bead Form · Bead Form Boss · Rotary Machines · Portable Expanders · Power Drive Bead Roller



34 - 37

TUBE NOTCHERS

Abrasive Notching Machines · Hole Saws · End Mill Notchers · Hole Saw Notchers · Pipe Notchers · PipeMasters



38 - 46

TUBE BENDERS

Design & Layout Software · Rotary Draw Benders · Mandrel Bending Machines · Hand Bending Machine · Roll Bending Machines · CNC Tubing Benders



47

CNC PLASMA SYSTEMS



DIGITAL ANGLE GAUGE



Wixey Digital Angle Finder/Level is a handy tool for finding true bevel angles on a saw, tracking rotation of a tube during tube bending (with optional base), or setting up milling/drilling operations. The gauge can be "zero'd" at any point. The small body is only 2" x 2" and has a strong magnetic base. Each Wixey gauge comes with an additional battery for extra long usage. You will find a lot of applications for this gauge!

The optional base will attach to round tubing or pipe that is 1" through 2" OD. The base also swivels independently of the gauge, so you can use it as a level.

- WR300 Digital Angle Gauge** \$39.99
- Angle Gauge Bracket Only** (attaches to 1"-2" round tube) \$59.99
- Digital Angle Gauge and Bracket Combo** \$99.98

DIGITAL SMART TOOL

No shop should be without this handy digital level. Accurate to 1/10 of a degree, the Digital Smart Tool runs for about 400 hours on a single 9 volt battery and has an automatic shut off after 6 minutes. Displays degrees, slope % and pitch (in/ft) with arrows to show the direction to move towards level. The display inverts when the tool is moved beyond 90°. Fits into most standard levels with oval slot.



- Digital Smart Tool** (module only) \$109.00
- Deluxe Smart Tool 8** (includes 8" aluminum rail with magnetic base, shown above) \$129.00

DIGITAL PROTRACTOR



These digital protractors can be used in any plane and will help find precise angles with ease. Excellent for setting up a saw, calculating the correct angle for a bend, or measuring an existing part. Measures to .1 degree.

- Range: +/- 180 degrees
- Resolution: 0.1 degrees
- Accuracy: +/- 0.1 degrees
- Auto shutoff for extended battery life
- Legs are 2" wide
- Built-in magnets on the edge of the legs
- Legs can be tightened for holding measurement

- WR410 Digital Protractor** (9" long legs) \$58.99
- WR418 Digital Protractor** (18" long legs) \$74.99

FRACTIONAL DIGITAL CALIPERS

Wixey Digital Calipers with Fractions are precision stainless steel calipers that display measurements in inches with fractions or millimeters. They are constructed of high quality hardened and ground stainless steel components. Wixey products incorporate patent pending "Precise Fraction Technology"™. This technology displays both decimal inches and fractions at the same time. The fractions only appear when they are almost precisely at the decimal equivalent (+/- .002"). This gives you at least 4 times the accuracy of other fraction displays. Includes carrying case, instruction manual, and additional battery.



- WR100 Digital Calipers w/ Fractional Readout** \$38.99

TORPEDO LEVELS

With their "no-compromise" design and superior quality, the Checkpoint Professional Levels are designed for portability, efficiency and professional durability. These levels feature rare-earth magnets for incredible holding power, CNC milled accuracy from billet 6061 aluminum alloy, and precision vials. They come with a lifetime guarantee on the "indestructible" bodies.



327 Laser Level



305 Mega Mag



300 Ultra Mag



303 Ultra Mini

- 303 Ultra Mini Mag \$33.99
- 300 Ultra Mag *New Price!* \$24.95
- 305 Mega Mag \$44.99
- 327 Laser Level \$77.99

ANGLE LEVELS



For critical projects use the Angle Level to accurately set or measure angles. Unlike many products that stick, vibrate and bounce, the Angle Level settles smoothly to the angle due to its oil damped, ball bearing movement. The hairline pointers can be precisely aligned and the angle read off to each degree, then divided at the vernier scale to the stated accuracy. A strong magnet base allows hands-off use on ferrous metals. This is a high quality tool with lots of features, not like cheaper versions.

- Angle Level 2 (1/10°) (3.6" x 3.1" includes case) \$59.95
- Angle Level 3 (1/20°) (5.5" x 5", die cast housing w/ carrying case) \$169.95

ROTATION GAUGES

Now to compliment our popular Angle Levels we offer two sizes of Angle Level Base. These powder-coated steel clamps provide accurate plane of bend tracking on round tubes. Great for chassis or exhaust work!

- ALB Angle Level Base (up to 2" tube) \$34.95
- ALB4 Angle Level Base (1-1/2" - 4" tube) \$44.95
- ALB Combo (Includes Angle Level 2 & ALB) *Save \$15!* \$79.90
- ALB Combo 4 (Angle Level 2 w/ ALB4 Base for up to 4" OD) *Save \$15!* \$89.90



ALB Combo

HUTH



The Huth rotation dial indicators are the perfect companion to large diameter tube bending applications such as exhaust, turbo, and cold air intake systems. The 976 CC is used with all non Huth bend data cards and, as with the 996 dial, is the most accurate in the industry. Built with a rugged cast aluminum body and weighted indicator arm, they are sure to stand up in a rugged environment.

- 1" OD - 3" OD capacity
- 360° rotation
- Dimensions: 4-1/2" x 9"

- 996 Clockwise Rotation (Huth bend cards) \$180.50
- 976 CC Counter-Clockwise Rotation (Non Huth bend cards) \$180.50

RADIUS CHECK GAUGE

This radius check gauge by Proline is a valuable addition to any metal shaper's tool box. Great for duplicating contours and assuring consistency in radiused sheet metal parts. Provisions for 0, .75", 1", 1.25", 1.5", 2", 3", 4", 6", 12", 24", 36" radii. CNC machined aluminum with durable red anodized finish.



- Proline Radius Check Gauge \$36.50

RADIUS GAUGE

These inside and outside radius measuring gauges are sure to speed up complicated calculations and fabrication of roll bent materials. We have two versions of the tool to accurately measure either the inside or outside radius of a piece. Applications such as handrails, spiral staircases, aircraft parts, boat railings, awnings, and more will benefit from this tool. An invaluable companion to any angle roll bending or plate roll machine. 6" – 144" radius range.



ArcMaster Kit (includes both gauges) \$219.99

BEND PROTRACTORS



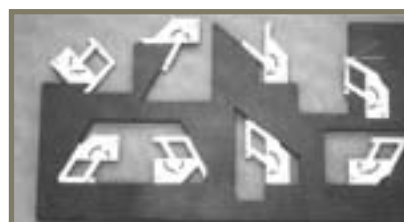
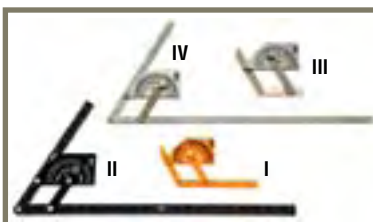
These high quality bend protractors will help you duplicate bends found in existing parts. They are available for five different radii and can be used as a template for one off parts.

- Easy to set for any degree of bend from 0°–90°
- Can be used as a bend template or degree indicator
- Available in 4", 5", 6", 7" and 8" radii
- Inner scale shows degree of bend
- Outer scale shows developed length for each degree of bend
- Lightweight aluminum for ease of use
- Precision CNC engraving

4" Centerline Radius Protractor	\$100.00	7" Centerline Radius Protractor	\$130.00
5" Centerline Radius Protractor	\$110.00	8" Centerline Radius Protractor	\$140.00
6" Centerline Radius Protractor	\$120.00	Complete Set of all five Protractors 4" thru 8"	\$510.00

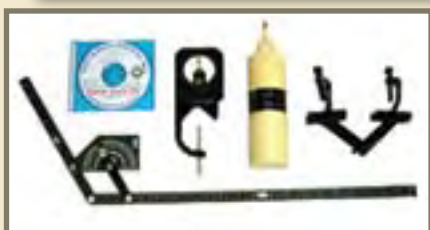
ANGLE FINDERS

Find any inside or outside angle between 10° to 360°. Choose from four different models.



Angle Finder I (plastic)	\$9.95
Angle Finder II (aluminum w/ pouch)	\$39.95
Angle Finder III (stainless)	\$59.95
Angle Finder IV (stainless w/ pouch)	\$79.95
Angle Finder II / III Kit Save!	\$89.90

TUBE BENDER SURVIVAL KIT



This kit features some of our best selling tube bending "Survival Tools." Included are 5 products to use with your tubing bender to reduce scrap material and save time!

- INCLUDES:**
- ALB Combo:** Helpful to track rotation of tubing
 - AF2:** Use this angle finder to check degree of bend
 - TC1:** Tube welding positioner to secure tubes during welding
 - Paste Lube:** Use this to save wear on your bender tooling
 - Options:** Bend Tech Layout software to assist with part manufacturing

Tube Bender Survival Kit	\$169.95
Tube Bender Survival Kit w/ BT EZ	\$219.95
Tube Bender Survival Kit w/ BT EZ-3D	\$299.95
Tube Bender Survival Kit w/ BT Pro	\$425.95



CIRCULAR COLD SAWS

Our circular cold saws are the quickest and most accurate way to cut tubing, bar stock and structural shapes without the mess of chop saws and much faster than band saws. The low speed blade with coolant produces a mill quality, burr free cut without heating the material. The head of the machine can easily be rotated to perform miter cuts or even slot down the end of a tube (350 model only).

We are proud to offer the Dake line of coldsaws. These industrial quality saws were chosen for their heavy duty spindles and gearboxes and for the superior warranty they offer. All the Dake saws come with a pedestal, blade, tool kit, coolant, adjustable stop and service manual. Call us for information on the complete line including semi-automatic and automatic applications.

- Head rotates 45° right and left of center for miter cutting
- Oversized spindle and gear assembly with steel spindle and bronze gear
- Additional ball bearing support of hardened and ground spindle shaft to prevent failure
- Cam activated vise with gib adjustment and anti-burr arm
- Bronze gear with tapered roller bearing support
- Reliable mechanical coolant pump with flow control adjustment
- 315 & 350 models feature 24v control circuit, E-stop switch, low voltage and thermal protection, optional pneumatic vise
- 350 model features an adjustable clutch, a third speed for non-ferrous applications, and 90° mitering

Capacity	Round Solid		Round Tube		Square Tube		Rectangle Tube	
Angle	90°	45°	90°	45°	90°	45°	90°	45°
Cut 250	1-1/4"	1"	2-3/4"	2-3/8"	2-1/2"	2-1/8"	3-7/8" x 1-3/4"	2-1/2" x 1-7/8"
Super Cut 315	2-1/8"	1-3/4"	3-5/8"	3-1/2"	3-1/4"	3-1/8"	4-1/4" x 2-3/4"	3-1/4" x 2-3/4"
Super Technics 350	3-3/8"	3"	4-3/4"	4"	4-1/8"	3-3/8"	6-1/4" x 3-1/2"	3-3/8" x 2-3/4"

Cut 250	10" blade	1.2hp/110v	44 rpm	378 lbs.	\$2,750.00
Super Cut 315	12.5" blade	2.5hp, 110v 1 ph 2.5hp, 220/440v 3 ph	44 rpm 22/44 rpm	450 lbs. 450 lbs.	\$4,500.00 \$4,500.00*
Super Technics 350	14" blade	3.5hp, 220/440v 3 ph	22/44/88 rpm	650 lbs.	\$5,995.00*

*Add \$500.00 for 440 volt

PORTABLE COLD SAW

This lightweight bench top cold saw can be easily moved around the shop or taken to the job site. With a durable cast iron construction, the Hyd-Mech P225 can cut small solids, tubing and structural shapes quickly with a smooth, mill-like finish.

- Head rotates 45° for miter cutting
- Control handle features the "blade on" switch in the handle for safety
- Flood coolant and pump
- Standard blade included
- Built in Italy



Capacity	Round	Square
90°	2-1/2"	2-1/4"
45° Left	2"	1-3/4"

Model Number:	P225
Motor:	1 hp
Blade Speed (rpm):	50
Blade Size (mm):	225 x 32 x 2
Maximum Blade Size:	9"
Vise Opening Max.:	2-3/4"
Weight (lbs.)	83

P225 Portable Cold Saw. \$990.00

METAL CUTTING SAWS

The Evolution Raptor Chop Saw is unlike conventional saws. Utilizing circular style blades, the cut quality, blade life, and safety factors are much better than abrasive cut off machines. The Raptor is also cleaner to operate, and builds far less heat in the material that is being cut. Evolution backs them with a three year warranty, and offers 4 varieties of blades to meet most cutting applications.

- 5-1/8" round, 4-3/4" square, and 4-3/4" x 7-1/4" rectangular capacity
- Miters up to 45°
- High quality construction
- Will cut stainless, aluminum, steel and sheet metal

Blade Size	14"
Arbor Size	1"
Weight (lbs.)	50
Watts	2200, 110v, 50-60hz
Amps	15
RPM	1300
Dimensions (H W D)	22" x 22" x 12-3/4"



Steel 2 Raptor **\$399.99**



Steel Saw 5

The Evolution line of saws cover many applications from thin sheet metal to 1/2" thick plate! Cuts tubing, angle iron, metal grating, channel, roofing, fencing, frames and more. It is much cleaner, faster, and safer than torches, portabands and other methods. The Evolution saw line offers two sizes of machines that are covered by a three year manufacturer's warranty.

- Clean cutting, collects virtually all chips and sparks
- Lightweight only 14 or 20 lbs., depending on model
- Cutting depth up from 2" or 3-1/4", depending on model
- Spindle lock for fast easy blade changes
- Bevels up to 45° on 230 Xtreme model
- Dry cutting for minimal clean up
- High quality construction
- Sturdy carrying case
- Overload switch
- Laser guide on 230 Xtreme model

Steel Saw 1 - 7 1/4" Metal Cutting Saw (110v, blade included) **\$179.99**

Steel Saw 5 - 9" Metal Cutting Saw (110v, blade included) **\$299.99**

PORTABLE BAND SAW

NEW!

This portable band saw from Femi is great for hobbyists and those needing a lightweight, portable saw with large cutting capacity. A two speed control aids in cutting both ferrous and non-ferrous metals, while the 45° swiveling miter head makes miter cuts a breeze

- Powerful 1 hp motor
- Two speeds
- Adjustable front band guide
- Optional table for vertical use
- Built in Italy



Shown with optional table

782 Portable Band Saw **\$489.00**

Vertical Work Table **\$134.00**

MAG BRUSH



The Mag Brush helps pick up filings and chips or even small parts by the use of a powerful magnet. Simply pull the plunger out to release over a bin or wastebasket. Saves time and money in cleanup. So handy you'll want one by all your machines.

Mag Brush (15" length) **\$19.95**

Super Mag Brush (36" length) **\$79.95**



PORTABLE BAND SAWS

NEW!

These variable speed utility band saws from Femi combine accuracy, speed, and large cutting capacity in a compact package. They feature powerful motors and heavy cast construction for years of use. Their innovative reverse blade rotation design results in up to 60% faster cuts than similar saws of this size.



NG120XL

Model	Capacity	Blade Size	Speeds	Motor	Mitering	Weight
NG120XL	4-3/4" Round	56-3/4" x 1/2"	115-260 fpm	1.7 hp	60° Left	39 lbs.
NG160	6" Round	68-1/4" x 1/2"	115-260 fpm	2.7 hp	45° Left	77 lbs.

NG120XL Portable Mitering Saw (110v) \$1,293.00
 NG160 Portable Mitering Saw (110v) \$1,915.00

HORIZONTAL BAND SAWS

These heavy-duty horizontal band saws from Dake have features normally only available on much more expensive machines. The heavy cast bed and housing makes for accurate and vibration free cuts while the low voltage controls, auto shut off and overload protection provide operator safety and machine longevity. These saws are covered by Dake's standard one-year warranty and come with the following standard equipment.

- Rugged gear box with bronze and steel gears
- Hydraulic control for down feed with locking valve
- Quick release vise and hand wheel action lead screw
- Chip brush blade cleaner
- Re-circulating coolant system

DAKE



SE 712

Model	Capacity	Blade Size	Speeds	Motor	Dimensions	Weight
SE712	7" round	93" x 3/4"	85/130/180/235	3/4 hp 110v	56 x 21 x 39h	350 lbs.
SE912	9" round	103.5" x 1"	98/164/246/328	1 hp 110v	56 x 21 x 41h	520 lbs.

SE712 Horizontal Band Saw (110v) \$1,675.00
 SE912 Horizontal Band Saw (110v) \$2,695.00



Model 1600

ELLIS

Ellis band saws are very popular for their dual mitering capability, extremely large cutting capacity, and rugged durability. The mitering head can rotate up to 60 degrees both left and right for miter cuts while the material stays stationary. Both portable and stationary models of bandsaws are available from Ellis to meet your needs in the shop or on the work site.

Model	Capacity (90°)	Capacity (45°)	Blade Size	Speeds	Motor	Dimensions	Weight
1600	10" round, 11" flat	6.875" round, 7.25" flat	120" x 1"	70/135/250	1 hp 110v	59 x 24 x 47h	481 lbs.
1800	11" round, 14" flat	9" round, 9" flat	132" x 1"	70/135/250	1 hp 110v	66 x 29 x 47h	640 lbs.

1600 Portable Mitering Saw (110v) \$2,795.00
 1800 Stationary Mitering Saw (110v) \$3,295.00

MITERING HEAD BAND SAWS

Kama has designed and built these bandsaws to give the user the most precise bandsaw cutting available in a machine that is quiet, yet powerful, and uses shop space very efficiently. The heart of this machine is a heavy duty, precision machined aluminum casting onto which is mounted a high power motor and double gear reduction drive train. The result is power and vibration free precision from the bandsaw blade to the cutting point.

- 6-3/4" capacity
- 2 speed gear drive
- 60° Mitering
- Integral coolant system



EV 996-2301 Stationary Bandsaw (230v 1 ph)	\$3,095.00
EV 996-2303 Stationary Bandsaw (230v 3 ph)	\$3,095.00
EV 996-1101 Stationary Bandsaw (110v 1 ph)	\$3,195.00
EV 97 Semi-Automatic with Air Power Down Feed (230v 1 ph)	\$3,795.00

DAKE



These industrial duty mitering head band saws swivel up to 60° so your material doesn't have to and their relatively small footprint helps out where space is limited. Each machine uses a 1" blade for the most accurate cut and are driven by a direct drive gear box. A hydraulic down feed with a lock out push/pull control and adjustable balanced head makes for smooth and simple repetitive operation.

- Low voltage controls meet CE standards
- End of cut and blade breakage shut off
- Quick cam lock vise
- Chip brush blade cleaner
- Re-circulating coolant system
- Pre-set blade tension stop

Model	Capacity	Blade Size	Speeds	Motor	Dimensions	Weight
ZIP28	8.75" round, 10" x 6" rect.	97.5" x 1"	214	2 hp, 1 ph	39 x 69 x 71h	441 lbs.
ZIP30	9" round, 9.5" x 6" rect.	96.5" x 1"	112/230	1 hp, 3 ph	33 x 58 x 61h	728 lbs.
TRAD301	10.5" round, 13" x 10" rect.	115" x 1"	118/236	1.3 hp, 3 ph	43 x 72 x 70h	948 lbs.

ZIP28 Mitering Head Band Saw (110v 1 ph)	\$3,275.00
ZIP30 Mitering Head Band Saw (220v 3 ph)	\$6,875.00
TRAD301 Mitering Head Band Saw (220v 3 ph)	\$9,950.00

VERTICAL BAND SAWS

These quality vertical saws by Dake are built to last. With capacities up to 41", we have a saw to fit any job and budget. Options like blade welders, power feed and tilt tables make these machines a great value. The 14-10 and Trademaster are built in the U.S.A., the F-16 is assembled in the U.S.A. and all are covered by Dake's one year warranty. Please call us for machines not listed.



Model	Blade Width	Blade Speed	Motor	Throat Cap.	Work Height	Weight
14-10	1/4" - 1/2"	70/140/270/540	1 hp	14"	10"	625 lbs.
F-16	1/8" - 5/8"	60-590	1.5 hp	16"	11"	975 lbs.
Trademaster	1/4" - 1"	50-500	1.5 hp	19.5"	12"	1,150 lbs.

14-10 - tilt table, 4 speeds, high performance at a low price (110/220v 1 ph or 220/440v 3 ph)	\$4,950.00
F-16 - fixed table, variable speed, digital tach, large capacity (220v 1 ph or 3 ph)	\$5,950.00
Trademaster - power feed tilt table with 11" travel, variable speed, work lamp (220/440 3 ph)	\$8,995.00



40 ton

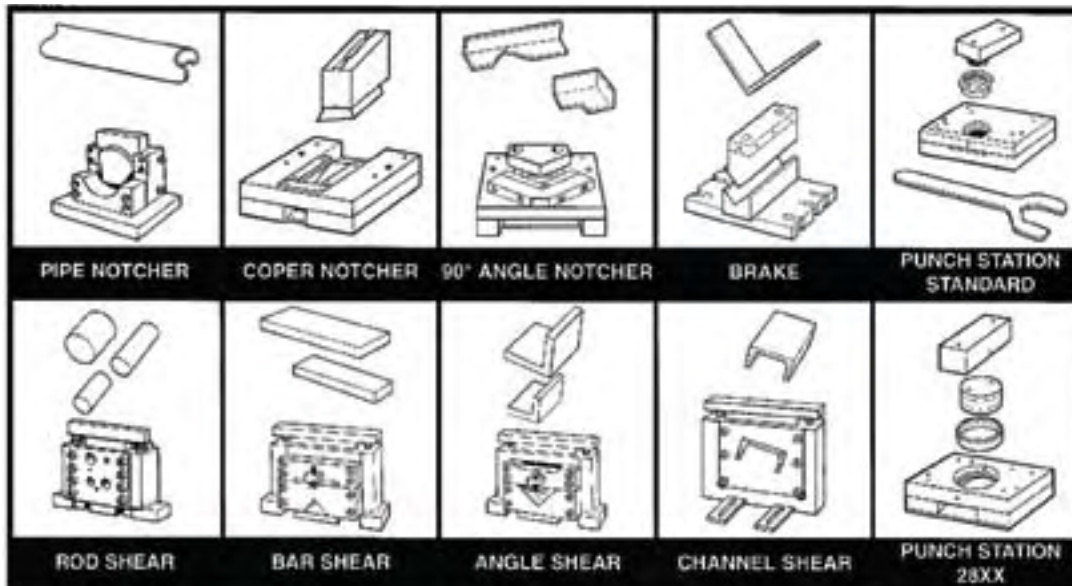
EDWARDS IRON WORKERS

The Edwards Ironworker is a compact, well designed, well built, uncomplicated hydraulic ironworker. All machines work on the same principle with the center pulling straight down on the work. All tooling moves in a perfectly vertical way. There is no arc of tool against material to be cut or punched. All stations operate as a unit so you can move from punch to shear to notcher to angle shear without changing or adding any new equipment.

The line starts with the "JAWS JR." 25 Ton unit which gives you a dedicated punch station and one open station for tooling of your choice (See below). The 40, 50 and 55 ton units also include plate and angle shears. The 65 ton machine has a huge 24" plate shear, angle shear, coper notcher, punch station and open station as well. Please call for more information on other models up to 120 tons and available options.

Capacities	Jaws Jr 25 ton	Jaws IV 40 ton	Jaws IV 50 ton	Jaws IV 55 ton	Jaws V 65 ton	Jaws IV 100 ton
Punch	1" through 5/16"	1" through 1/2"	1" through 5/8"	1-1/6" through 5/8"	1-1/16" through 3/4"	1-1/16" through 1"
Plate Shear	1/4" x 6" (opt.)	3/8" x 10"	1/2" x 10"	3/8" x 14"	3/8" x 24"	3/4" x 14"
Angle Shear	2" x 1/4" (opt.)	3" x 1/4"	4" x 1/4"	4" x 1/4"	5" x 3/8"	6" x 1/2"

- Jaws Jr. 25 ton (110/220v 1 hp 1 ph) \$4,296.00
- Jaws IV 40 ton (220v 5 hp 3 ph, add \$300 for 1 ph) \$5,896.00
- Jaws IV 50 ton (220v 5 hp 3 ph, add \$300 for 1 ph) \$6,696.00
- Jaws IV 55 ton (220v 5 hp 3 ph, add \$300 for 1 ph) \$7,296.00
- Jaws V 65 ton (220v 5 hp 3 ph, add \$300 for 1 ph) \$13,396.00
- Jaws IV 100 ton (220v 5 hp 3 ph, add \$300 for 1 ph) \$18,796.00



TOOLING SETS

These tooling sets are designed for use in ironworkers and presses. They can be custom designed for nearly any application. Please call us for pricing.



MULTI-SHEAR

This versatile tool is a great value and works in many ironworkers and presses. It includes a 2" x 2" x 1/4" angle shear, square and round rod shears up to 1" and a 6" x 1/4" plate shear. Works great in conjunction with the Jaws ironworkers.

Multi-Shear \$790.00



SCOTCHMAN IRON WORKERS

Scotchman Ironworkers are versatile and dependable ironworkers with a variety of unique options. Scotchman's unique component tool design will accept a large range of standard tools and special tooling, and can be used as a power source where the customer builds his own tooling. Punch, angle, and flat bar shears are standard, but the beauty of this machine is that it can adapt to whatever your customer brings in the door.



- 45 ton punch station (1-1/8" in 1/2")
- Keyed punch ram for safety
- 4-1/4" throat depth
- 2" die holder
- Punch nut with wrench and stripper
- One round punch & die: max. dia. 1"
- Adjustable electric stroke control with scale
- Three-in-one combination tool
- Angle shear capacity: 3" x 3" x 5/16" at 90° and 2" x 2" x 1/4" at 45°
- Bar shear capacity: 3/8" x 6"
- Rod shear capacity: 3/4" round
- Tool table work area
- Machine stand with punch & die & tooling storage rack
- 110v, 1 ph electrics
- All guards necessary to comply with ANSI B 11-5 standards
- Three-year warranty
- Made in the U.S.A.

Porta-Fab 45 ton Ironworker (includes 3-in-1 tool) **\$6,190.00**

- 50 ton punch station with 3-station revolving turret (1-1/4" in 1/2")
- Keyed punch ram for safety
- 4" throat depth
- Three 2" die holders, three punch nuts with wrench and three strippers
- One round punch & die: max. dia. 1" adjustable stroke control
- Angle shear 4"x 4" x 3/8" at 90° and 2" x 2" x 3/8" at 45°
- 14" flat bar shear with 4-way reversible blade (3/4" x 4", 1/2" x 8", 3/8" x 10", 1/4" x 14")
- Rectangular notcher, (2-1/2" x 3" x 5/16", 2-1/2" x 2-3/4" x 3/8")
- Tool table work area
- Electrical box supplied with emergency palm button and lock-out tag-out accommodations
- 230/460v, 3 ph electrics (must specify voltage)
- All guards necessary to comply with ANSI B 11-5 standards
- Forklift accommodations
- Three-year warranty
- Made in U.S.A.



5014-TM 50 ton 3 Station Turret Ironworker (less angle shear) **\$11,490.00**

BENCHTOP PRESS BRAKE



This compact benchtop press brake is the perfect solution for the fabricator needing to bend small sections of sheet metal and plate steel. Utilizing a common 20 ton bottle jack, this press requires no outside power source or specialized pumps. Ideal for making suspension and body support brackets. With its relatively small footprint this press is also a perfect fit for those with limited working space. And with the optional 4-sided V-die made from 4140 tool steel, tight radius bends can be made in lighter weight materials. Bottle jack not included.

CAPACITIES

- 20 tons maximum
- 8" in 3/8" mild steel
- 10" in 1/4" mild steel
- 4" in 1/2" mild steel
- 9" in 5/16" mild steel
- 2" in 5/8" mild steel

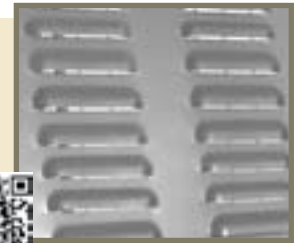
Benchtop Press Brake **\$399.95**
4-way V-die (1/4", 1/2", 3/4", and 1" openings) **\$199.95**
H-frame Press Option **\$199.95**
Stroke & Depth Gauges **\$99.95**



LOUVER PRESS KIT

The Mittler Brothers Louver Press is a profit making tool. Each kit includes a 10 ton hydraulic ram, precision slide assembly, die mounting plate, one set of your choice of louver dies, bill of materials, blueprints, and complete instructions for building a 48" throat depth press.

- Punches steel or aluminum
- Accepts all MB bench press tooling
- Up to 5" long louvers
- 16 gauge capacity



Complete Louver Punch Kit (with choice of one louver punch set)	\$1,575.00
Additional 1", 2", or 3" Louver Die	\$425.00
Additional 4" or 5" Louver Die	\$450.00
Air/Hydraulic Pump w/ 20' Hose & Fitting	\$499.00

10 TON BENCH PRESS

This versatile tool is one of the latest offerings from Mittler Brothers and is sure to increase productivity. Use it with iron worker tooling or as a heavy duty arbor press. The 10 ton Bench Press can handle a 3" punch and flare or louver through 14 gauge mild steel. Can be used with most common hydraulic pumps.

- Accepts all MB bench press tooling
- Rugged construction
- 25" extra deep throat
- 6" tool opening
- 4" stroke, 10 ton cylinder
- Includes a slug ejector and spring loaded center



10 Ton Hydraulic Bench Press	\$1,950.00
Floor Stand w/ Casters	\$300.00
Electric/Hydraulic Pump w/ 10' Hose	\$1,610.00



DIMPLE DIES

These dimple dies from JMR, also known as flare tools, are used to improve the strength and appearance of a panel and will flange or flare an existing hole in sheet metal up to .125" 4130 Chrome Moly. Each size is self centering, so they work great in a press or Iron Worker. Precision machined from hardened tool steel for years of use.

DD1007 7 Piece Dimple Die Set (1/2", 3/4", 1", 1-1/4", 1-1/2", 1-3/4", and 2")	\$525.00
DD1005 5 Piece Dimple Die Set (1/2", 1", 1-1/2", 2" and 2-1/2")	\$425.00
DD1004 4 Piece Dimple Die Set (1/2", 1", 1-1/2", and 2")	\$295.00
DD1002 2 Piece Dimple Die Set (2-1/2", and 3")	\$375.00

PORTABLE PUNCH & DIE KIT

At last, a way to punch and dimple panels which are too large to fit into a press or are already welded in place. These portable dimple die kits from JMR Manufacturing allow you to punch holes and dimple both steel and aluminum. Especially useful for working on off road vehicles or job sites where transporting a press is not practical.

- 1.115", 1.362", 1.687", 1.937", and 2.375" cutter sizes included
- 10 Ton Hydraulic Cylinder
- Dimple Dies can also be used in a standard press



DDH105 Standard Hydraulic Kit (Includes five piece dimple and punch set with hand pump, ram and adapters)	\$795.00
DDAH105 Air/Hydraulic Kit (Includes five piece dimple and punch set with air/hydraulic pump, ram and adapters)	\$995.00
DDNP105 Dimple Dies, Punches, and Ram Only (Does not include pump, hose, or hydraulic fittings.)	\$745.00

BENCH PRESS



- Speeds up metal fabrication
- Fits punch & flare tools
- Rugged construction
- Bronze bushings for long life
- Max capacity: 3" dia. punch & flare—16 gauge steel
- 12" deep throat
- Can be used as a standard arbor press
- Uses standard punch & dies for round, square, & oblong holes

- Standard Bench Press (3 ton) \$525.00
- Hydraulic Bench Press (5 ton) \$675.00
- Air/Hydraulic Pump, Hose and Fitting \$454.00

ACCESSORIES

Complete Louver Assembly

(w/ one die & tooling adapter) \$580.00

Additional Louver Dies (1", 2", or 3") \$425.00 ea.
(4", or 5") \$450.00 ea.

90° Brake Kit \$165.00

Corner Notcher Kit \$165.00

Shear Kit \$165.00

1/4", 1/2", 3/4", 1" Corner Radius Punch \$250.00

Shrinker / Stretcher Set \$300.00

PUNCH & DIES

Round Punch & Dies (heat treated tool steel with 1/32" die clearance for material up to 16 ga. mild steel)

3/16" - 1" \$80.00 ea.

Dzus Punch and Die Set \$295.00

Punch & Die Mount Kit \$140.00

PUNCH & FLARE TOOLS

Just drill a pilot hole for the draw bolt, then apply the tool and tighten the bolt for a smooth, flared hole in one easy step. Our Punch & Flare tool can also be used as a hole punch, simply by using the punch and male flare.

- 1" \$95.00
- 1-1/4" \$95.00
- 1-1/2" \$110.00
- 1-3/4" \$110.00
- 2" \$120.00
- 2-1/2" \$120.00
- 2-5/8" (excellent for aerosol cans) \$125.00
- 3" \$135.00

SETS

- Set 1" to 2-1/2" \$580.00
- Set 1" to 3" (7 pieces, 2-5/8" not included) \$710.00

FLARE TOOLS

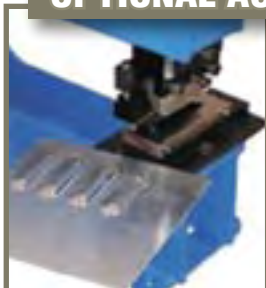
Now, in one easy step you can flare sheet metal panels for improved strength and appearance. Precision machined from heat-treated steel for years of use. 16 gauge steel is the maximum thickness.



- 1/2" \$40.00
- 5/8" \$40.00
- 3/4" \$40.00
- 1" \$40.00
- 1-1/4" \$40.00
- 1-1/2" \$45.00
- 1-3/4" \$45.00
- 2" \$45.00
- 2-1/2" \$45.00

Set 1/2" to 2-1/2" \$320.00

OPTIONAL ACCESSORIES FOR BENCH PRESS



Louver Die



90° Brake



Corner Notcher



Shear

SHEET METAL CUTTERS

Sluggo sheet metal cutters easily outperform standard hole saws by cutting a more accurate hole up to three times faster with far superior tool life. These precision ground cutters can be used in a hand drill or drill press and will leave a smooth finish with minimal material deformation. Their 1/4" depth of cut keeps vibration and distortion to a minimum. Sizes are available individually from 3/8" to 3" OD. Contact us for applications not listed.



- SMS000 Sheet Metal Cutter Set** (Includes sizes 5/16", 3/8", 7/16", 1/2", 9/16", 5/8", 3/4" w/ arbor, pilot pin, and carrying case) . . . **\$89.95**
- SM000VS Sheet Metal Cutter Set** (Includes sizes 1", 1-1/4", 1-1/2", 1-3/4", 2", w/ two arbors, and carrying case) **\$185.00**
- SM000 Sheet Metal Cutter Set** (Includes sizes 7/8", 1-1/8", 1-3/8", 1-3/4", 2", 2-1/2" w/ two arbors, and carrying case) **\$195.00**



DRILLING JIG

The Center-It drill jig is a must for drilling holes in tubing and pipe. It is specifically designed for use in a drill press. The V-block bolts to the table and the angled flats hold the material firmly in place so holes can be drilled without center-punching or clamping.

- Holds round tube and pipe
- Dimensions: 5" long x 4" wide x 1-3/4" tall
- Made of heavy aluminum extrusion

CI-1 Center-It Jig **\$16.99**

DRILLING GUIDE

The Drill-Rite jig is designed to allow the user to drill precise holes in tubing, pipe and round stock using a portable electric hand drill. Originally developed for use in the aircraft industry, this jig will allow you to quickly and easily drill holes in pre-existing chassis tubing, framework, or any other hard to reach area.

- Fits any round tube, pipe, or round stock material from 1/2" to 2-1/2" in diameter
- Includes hardened drill bushings for 3/16" and 1/4" holes
- Built from lightweight, high quality aircraft grade aluminum



Drill-Rite Guide **\$54.95**



TUBE DRILLING LEVEL KIT

This kit will continue to find many uses in any shop. The six included pins will thread into any of the 4 levels to drop into drilled holes and give an accurate reference point for the next drilling operation. The "C" shaped bracket attaches to round tubing or pipe, and can be used to track rotation between copes on each end of a tube, or to track rotation of tubing while building a multi-bend part.

- 4 levels included
- Other pin sizes available
- Tubing up to 2" can be held in the "C" bracket
- 6 pins included (1/8", 3/16", 1/4", 5/16", 3/8", 1/2")

Tube Drilling Level Kit **\$79.95**

HAND PUNCHES



5 Jr



XX (shown with optional bench mount)

These Hand Punches by Roper Whitney can save a lot of time over drilling sheet metal and are much more accurate. Hardened, machined bearing surfaces are used in these tools to provide dependable long life. Both punches have optional bench mounting bases and come with a standard assortment of round punches and dies in a durable plastic box. See the chart at the bottom of the page for more punch options.

- 1.2 tons of punching power
- Smallest available
- Adjustable stop gauge
- Plastic case with die organizer



The 5 Jr punch has a standard 1-3/4" throat depth, while the XX has a deep throat configuration to punch up to 3-1/4" from the edge with up to an 1-3/8" flange.

Please call us for special punch and die applications. Below are some typical sizes and shapes.

PUNCHES & DIES

Model	Type O	Type M	Type N	Type P	Type R	Type S	Type T	Type D
XX	1/16" – 17/32"	1/8" x 3/16" – 7/16" x 1/2"	1/8" x 3/16" – 5/16" x 3/8"	1/8" x 3/16" – 7/16" x 1/2"	1/8" – 17/64"	3/16" – 3/8"	3/16" – 3/8"	3/16" x 1/8" – 17/32" x 1/2"
5 Jr	1/16" – 9/32"	1/8" x 3/16" – 1/4" x 9/32"	1/8" x 3/16" – 5/32" x 7/32"	1/8" x 3/16" – 1/4" x 9/32"	1/8" – 3/16"	5/32" – 7/32"	5/32" – 7/32"	3/16" x 1/8" – 9/32" x 1/4"

- 5 Jr Hand Punch Kit (includes one 3/32", 1/8", 5/32", 3/16", 7/32", 1/4", and 9/32" round punch and die, in plastic case) **\$86.00**
- 5 Jr Bench Mounting Base (not included with kit) **\$30.00**
- XX Hand Punch Kit (includes one 5/32", 7/32", 9/32", 11/32", 13/32", 15/32", and 17/32" round punch and die, in plastic case) **\$254.00**
- XX Bench Mounting Base (not included with kit) **\$47.00**

ELLIS

DRILL PRESS



The Ellis drill press is one of the most versatile drill presses available. With standard features such as power down-feed, infinitely variable speed operation, and instantaneous reverse for tapping; its value is unsurpassed. The Ellis drill press is also extremely durable, featuring a 4" diameter column, 3" diameter quill, and a 2 hp motor. The table and base are both T-slotted.

Spindle Speeds	Drills to Center	Drilling Capacity	Tapping Capacity	Morse Taper	Spindle Travel	Spindle to Table (max.)	Spindle to Base	Table	Base
0–1200 rpm	18-1/8"	Steel: 1-1/16" Cast Iron: 1-1/4"	3/4"	No. 3	5-3/8"	27-1/4"	46-1/4"	15-7/8"	16-3/8" x 26-5/8"

- 9400 Drill Press (110v) **\$3,495.00**
- Ball Bearing Chuck **\$125.00**
- Drill Press Vise 4-1/2" Capacity **\$175.00**
- Drill Press Vise 13" Capacity **\$250.00**
- Milling Table – 11" Crosfeed, 6-1/2" in/out feed **\$350.00**

TENNSMITH BRAKES AND SHEARS

Tennsmith offers a wide variety of quality brakes and shears. These heavy duty units offer industry leading features such as replaceable nose bars, high-chromium blades, and cast frame construction. A wide range of machines covers 4' to 12' widths, and 22 gauge through 12 gauge capacity. These U.S.A. made machines feature a 3-year manufacturer's warranty.

SHEARS

Model Number	Mild Steel Capacity	Cutting Length	Price
36 (Foot Shear)	16 ga.	36"	\$2,050.00
36A (Air)	16 ga.	36"	\$4,100.00
52 (Foot)	16 ga.	52"	\$2750.00
52A (Air)	16 ga.	52"	\$5,200.00
52H (Hydraulic)	16 ga.	52"	\$6,200.00
SK1020 (Hand)	20 ga.	120"	\$9,995.00



HAND BRAKES



Model No.	Mild Steel Capacity	Bending Length	Price
S48-22*	22 ga.	48"	\$680.00
HBS48-16*	16 ga.	48"	\$1,295.00
HB48-12	12 ga.	48"	\$3,300.00
HB73-16	16 ga.	73"	\$3,400.00
HB97-18	18 ga.	97"	\$3,600.00
HB97-16	16 ga.	97"	\$4,100.00
HB97-12	12 ga.	97"	\$6,900.00
HB121-18	18 ga.	121"	\$5,200.00
HB121-16	16 ga.	121"	\$6,200.00
HB121-14	14 ga.	121"	\$6,700.00
HB145-18	18 ga.	145"	\$7,300.00

* Benchtop units—optional floor stand \$215.00

BOX & PAN BRAKES

Model No.	Mild Steel Capacity	Bending Length	Max. Depth of Box	Price
U48-22*	22 ga.	48"	3"	\$880.00
HBU48-16*	16 ga.	48"	3"	\$1,395.00
HBU48-12	12 ga.	48"	4"	\$3,900.00
HBU72-16	16 ga.	72"	4"	\$4,400.00

* Benchtop units—optional floor stand \$215.00



DEEP BOX & PAN BRAKES

Model No.	Mild Steel Capacity	Bending Length	Max. Depth of Box	Price
F6 48-12	12 ga.	48-1/4"	6"	\$5,200.00
F6 72-12	12 ga.	73"	6"	\$6,200.00
F6 96-12	12 ga.	97"	6"	\$7,800.00
F6 120-14	14 ga.	121"	6"	\$9,300.00

MAGNETIC SHEET METAL BRAKE

NEW!

The Tennsmith electromagnetic brake offers performance no conventional bending brake can match. The unique design of the clamping system eliminates typical interference points of standard machines. The rugged simple construction incorporates only one moving part to assure low maintenance and versatility for light duty forming. The included tooling allows for a wide variety of complex shapes to be created right out of the box including rolled edges up 330°, partial length bends, closed shapes, and unlimited box depths. Made in the USA.

Features:

- 48" 18 ga mild steel capacity
- Unlimited box depth
- 110v 1ph power for easy placement
- Rugged simple construction, requires low maintenance
- Back gauge for repeatability
- Bend angle gauge for precise bends
- Full length bar and individual fingers included:
52-1/2, 26, 12, 6, 4, 3, 2, 1-1/2, 1, and 3/4"
- Made in the USA!



Magnetic Sheet Metal Brake **\$1,850.00**

MITTLER BROTHERS RACER BRAKE

NEW!



This 6' sheet metal brake is the ideal light gauge solution for making your own race car bodies or HVAC work. With a .040" aluminum capacity, and 22 gauge steel, it will handle many applications. Plus, an optional 1" OD radius bar is available for those fragile aluminum applications or to add a nice flare to your material.

Specifications	6 ft.
Mild Steel Capacity	22 ga.
Aluminum Capacity	.040"
Radius Bar	1" OD optional
Minimum Flange @ Capacity	5/8"
Weight	340 lbs.

6-Foot Racer Brake **\$1,250.00**
 Optional Radius Bar **\$150.00**

ULTIMATE BOX & PAN BRAKE

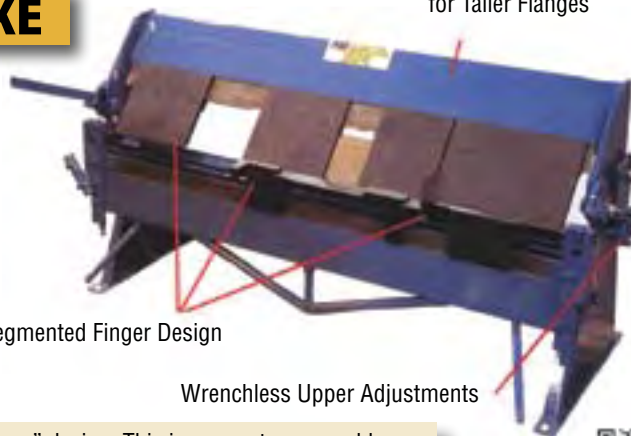
Capacity	16 ga. / 18 ga. mild steel
Bending Length	48" / 72"
Maximum Depth of Box	3-1/2"
Maximum Lift of Beam	1-1/4"
Front to Rear Adjustment	7/8"
Minimum Reverse Bend	1/2"
Minimum Flange Xapacity	1"
Shipping Weight	550/850 lbs.

Ultimate Box & Pan Brake (48" benchtop) \$2,950.00
48" Floor Stand \$275.00
Ultimate Box & Pan Brake (72" floor) \$5,250.00

3 Segmented Finger Design

Wrenchless Upper Adjustments

Short Upper Beam Allows
for Taller Flanges



The Mittler Bros Ultimate Box & Pan Brake features a unique "3 Finger" design. This incorporates moveable fingers on the bed and apron, as well as the usual upper fingers. This new design allows the operator to make bend combinations that were extremely difficult, if not impossible, in the past. Unit ships standard with: 1", 2", 3", 6", 12", 24" Upper Fingers, Bed Fingers, and Apron (leaf) Angles. Contact us for optional accessories.



RADIUS BRAKES

This sheet metal radius brake is the perfect solution for forming radius bends in mild steel and aluminum. Stress and cracking of material is minimized due to the unique design of the apron, which swings outside the radius and rolls across the material. Especially useful in race car fabrication, as well as automotive and aircraft restoration work, this brake is an excellent addition to any sheet metal fabrication shop.

- 1/2" plate construction
- Quick tooling change over
- Convenient radius roll storage on machine
- 5 radius rollers included with machine: 1", 2", 2-1/2", 3" and 4" OD



Model	6 ft.	8 ft.
Mild Steel Capacity	16 ga. (.063")	18 ga. (.049")
Aluminum Capacity	.090"	.063"
Maximum Bend Length	72"	96"
Weight	850 lbs.	1,090 lbs.

6-Foot Radius Brake \$2,195.00
8-Foot Radius Brake \$2,695.00

4-foot model coming soon!



MANUAL SLIP ROLLS

Tennsmith's slip rolls combine precision-turned, ground and polished, high carbon steel rolls with heavy-duty, cast iron end frames, and welded steel base to make an accurate and durable forming tool. Convenient operating features include large roll adjusting screws, scales for speeding repeat set-up, and a front-mounted handle to lift the upper roll for material removal. Wire grooves are standard. The new 3-driven roll machines allow for great traction on hard to bend materials.

Model Number	SR24/SR324	SR36/SR336	SR42/SR342	SR48
Capacity (Mild Steel)	20 ga.	22 ga.	24 ga.	16 ga.
Max. Forming Length	24"	36"	42"	49"
Diameter of Rolls	2"	2"	2"	3"
Min. Forming Radius	1"	1"	1"	1-1/2"
Wire Grooves	3/16", 1/4", 5/16"	3/16", 1/4", 5/16"	1/4", 5/16", 3/8"	3/8", 1/2", 5/8"
Ship Weight	190 lbs.	250 lbs.	270 lbs.	775 lbs.

SR24, 24" Slip Roll (2 driven rolls) \$740.00
SR324, 24" Slip Roll (3 driven rolls) \$895.00
SR36, 36" Slip Roll (2 driven rolls) \$880.00
SR336, 36" Slip Roll (3 driven rolls) \$995.00
SR42, 42" Slip Roll (2 driven rolls) \$990.00
SR342, 42" Slip Roll (3 driven rolls) \$1,095.00
SR48, 48" Slip Roll (3 driven rolls) \$3,375.00



HAND NOTCHER

The Tennsmith Model 16-18 is a versatile, heavy-duty bench tool for shearing, notching and piercing work. The heavy cast iron construction allows the notcher to be used to side shear 6 inches of material to its rated capacity; and the throat behind the upper ram is beveled on one side to permit long strips of material to pass without restriction. Notches of more than 90° can be accomplished in two operations. The upper blades can be reversed for a "nose to heel" cutting action, and the ram stroke can be controlled by means of two set screws to permit limited throat piercing and knockout operations.

Optional box flange blades are available for reinforced box, pan and chassis corners. Front gauges and large surface, ground work table with inlaid scales are standard features.

16-18 Bench Hand Notcher w/ Regular Blades \$895.00
16-18 Bench Hand Notcher w/ Box Flange Blades \$985.00
16-18 Optional Floor Pedestal \$295.00

SHEARS & NIBBLERS



Nibbler



Shear

FEIN nibblers are among the most compact power tools for cutting trapezoidal and corrugated sheet metals, as well as profiles. Their slim design makes them extremely versatile and precise in the curves. The working direction can be altered tool-free. FEIN shears are suited for quick and warp-free cut-outs in sheet metals, profiles, and even pipes. The open front cutting head provides an optimal view of the cutting line, making precise work possible. Uncompromised quality machines for sheet metal shops, race shops, HVAC work, and electrical installation.

BLS 1.6X Shear, 16 ga. (110v)	\$820.00
BLS 2.5 Shear, 12 ga. (110v)	\$926.40
BLS 3.5 Shear, 10 ga. (110v)	\$1,782.40
BLS 4.2 Shear, 7 ga. (110v)	\$2,158.40
BLK 1.3CS, 18 ga. (110v)	\$659.20
BLK 1.6 Nibbler, 16 ga. (110v)	\$659.20
BLK 3.5 Nibbler, 10 ga. (110v)	\$1,776.80
BLK 5.0 Nibbler, 6 ga. (110v)	\$2,543.20

SHEET METAL SLITTER

The RAMS Sheet Metal Slitter is the perfect addition to any sheet metal shop, whether it be HVAC, construction, or race car related. This machine provides the perfect answer to shearing long lengths of steel or aluminum which are too wide to be cut by a normal stamp shear. With a THK Bearing Slide rail, and easy to read scale, adjustments to cutting width can be made effortlessly with one hand. The adjustable top cutter on this machine also eliminates the need for adjustment shims. Available as a floor model or tabletop, each can handle up to 16 gauge mild steel or .080" aluminum.



Table Top Slitter (110v)	\$2,995.00
Floor Model Slitter (110v)	\$3,295.00



THROATLESS SHEAR



This is the famous Beverly Shear that top custom car builders use. Throatless design lets you turn your work at any angle for straight, curved, even irregular cuts with ease and accuracy. Powerful leverage through rack and pinion gearing. Easily cuts mild steel and stainless using tool steel blades (adjustable for wear) which provide burr-free cuts. Drilled for work-bench mounting.

B-1

- 18 lbs.
- 14 gauge mild steel capacity
- 18 gauge stainless capacity
- 18" height (less handle)
- 4-1/4" blade length

B-2

- 36 lbs.
- 10 gauge mild steel capacity
- 14 gauge stainless capacity
- 15" height (less handle)
- 4-3/8" blade length

B-3

- 58 lbs.
- 3/16" mild steel capacity
- 10 gauge stainless capacity
- 15" height (less handle)
- Adjustable hold down
- 5-3/8" blade length

B-1 Beverly Shear	\$536.00
B-2 Beverly Shear	\$747.00
B-3 Beverly Shear	\$1,081.00



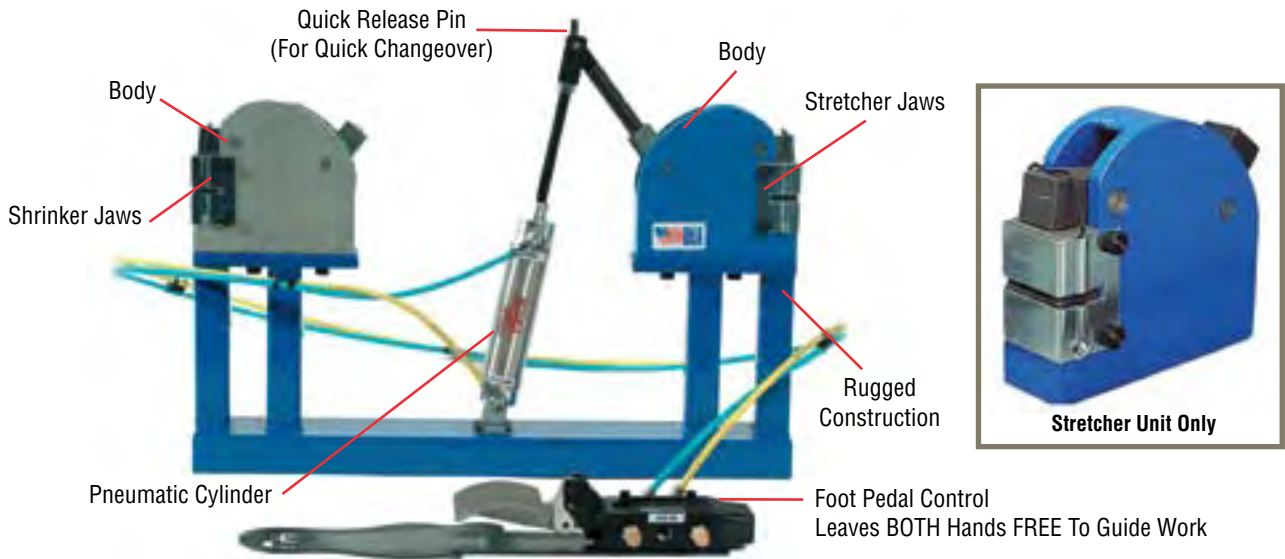
SHRINKER AND STRETCHER TOOLS

Sensible design and powerful pedal ratio make shrinking and stretching more effective, less labor intense, and will make any standard metal shrinker or stretcher a more productive and useful machine. Hands free operation allows better control of your metal work and much faster results! Mobile unit on casters allows easy transport around the shop for access wherever needed. Sturdy construction and attractive finish makes the foot-operated Shrinker/Stretcher stand ideal for the hobbyist or professional metal shaper.

- 18 ga mild steel capacity
- Fabricated from steel tubing
- Heavy duty return spring means quick action and long life
- Threaded tie rod allows quick and easy adjustment for initial setup
- Stand height: 42" (once tools are placed on stand overall height is approx. 47-1/2")
- Made in the U.S.A.

Shrinker/Stretcher Deluxe Kit (as shown above)	\$689.00
Stand Only	\$349.00
Shrinker Unit Only	\$185.00
Stretcher Unit Only	\$185.00
Combo Unit (1 body with both sets of jaws)	\$270.00
Combo Unit #2 (Both bodies and jaws)	\$365.00
Replacement Jaws Sets (shrinker or stretcher)	\$115.00

POWERED SHRINKER AND STRETCHER



Looking to form compound curves in metal? These shrinker/stretcher tools can form curves down to a 3" radius in a variety of metals: mild steel (up to 16 gauge), stainless steel (up to 20 gauge), and aluminum (up to .063). The Shrinker forms outside radius curves and the Stretcher forms inside radius curves. They are perfect for forming complicated patch pieces for such areas as rear wheel arches, dog legs, window edges, and trunk edges. Made in the U.S.A. by Lancaster.

Power Shrinker/Stretcher (as shown above)	\$650.00
Power Unit (less shrinker & stretcher)	\$375.00

DEEP THROAT SHRINKER/STRETCHER



- Mild steel capacity of 16 gauge
- 6" deep throat
- Quick change jaws included
- Foot operation to leave hands free to work the material
- One year warranty
- Wheeled base included to use as freestanding unit
- Height: 44"
- Width: 6.3"
- Depth: 30.3"
- Weight: 70 lbs.
- Swedish import by JS Tools

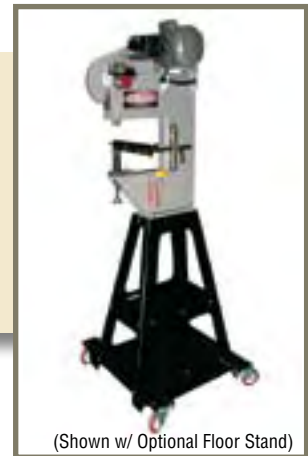


KSM 155 Pro Shrinker/Stretchers	\$2,900.00
KSM 003 Shrinker Jaws for Aluminum	\$490.00
KSM 004 Stretcher Jaws for Aluminum	\$490.00

PROLINE POWER HAMMER

The ProLine Minimax does the work of a large and expensive Pullmax machine. This unit accepts Pullmax style tooling for shrinking, beading, edge setting, planishing and more. It is the perfect compliment to our English wheels or planishing hammers.

- Mild steel capacity is 16 gauge
- Aluminum capacity is 11 gauge (3003 H14)
- 11" throat
- 1150 strokes per minute
- Powder-coated finish
- Includes straight and contour fences
- One year warranty



(Shown w/ Optional Floor Stand)

MiniMax Power Hammer (120v)	\$3,950.00
MiniMax Variable Speed Power Hammer (120v)	\$4,575.00
MiniMax Deluxe Power Hammer (includes rolling stand, thumbnail shrink dies, and variable speeds, 120v)	\$6,050.00

BENCHTOP ENGLISH WHEEL



22B
(Shown w/ Optional Floor Stand)

Clearly, this is the most popular of in-home English Wheels. Trick out your custom-built bike or complete hobby projects without breaking the bank. Provides outstanding performance on small jobs like motorcycle tanks, tank covers, seat cowls and aircraft fillets. Versatile use: mount on bench, clamp in vise or use with optional welded stand.

- Height: 29" • Width: 27"
- Standard working height (from bench): 16-1/2"
- Standard working height (with opt stand): 42-3/4"
- Base: 6" x 19" • Throat: 22"
- Weight: approx. 73 lbs.
- Upper wheel: 8" dia. x 2" wide 1045 alloy steel billet, polished to a smooth 63 finish
- Capacity of 18 ga. steel and .090" soft aluminum
- 3.25" radius anvil wheel standard
- Can be mounted to a bench, clamped in a vice or used with the optional welded floor stand
- Anvil yoke is adjustable on both sides of the axle support with thumb screws so the anvil wheel can be trued with the upper wheel

22B Benchtop English Wheel (includes 3.25" R anvil wheel)	\$695.00
Discovery Kit (includes 22B, 8.50" R, 3.25" R and flat anvil wheels, plus shot bag, mallet, radius gauge and instruction DVD)	\$995.00
22B Deluxe Benchtop English Wheel (includes 1.0", 2.50", 3.25", 5.0", 8.50" radii and flat anvil wheels)	\$1,135.00
22B Floor Stand	\$200.00

METAL ACE™ ENGLISH WHEELS

Show your mettle with our go-anywhere metal crafting machine. Mounted on 3" casters, the sturdy welded frame offers on-the-go metal bending for racing needs, auto restoration and aircraft rebuilding. Large enough for monster jobs, 44F English Wheels are also perfect for smoothing a wrinkled quarter or rocker panel. Just ask the folks in professional auto racing or the owners of collision repair centers.

Although the MetalAce™ 44F is portable, it's sturdy and large enough to handle almost any metal crafting need, whether your job requires aggressive bending or smoothing a wrinkled surface.

- Height: 73" • Width: 59"
- Standard working height: 48"
- Base: 32-3/4" x 38" • Throat: 44"
- Weight: approx. 350 .lbs.
- Upper wheel: 8" dia. x 3" wide 1045 alloy steel billet, polished to a smooth 63 finish
- Anvil wheels: six wheels made from 1045 alloy steel 3" wide x 3" diameter
- Capacity of 16 gauge steel and 1/8" soft aluminum
- Includes anvil wheel storage rack
- Features can be rolled into the center of an 88" panel
- Screw lift assembly has a quick-release cam mechanism that lowers the anvil yoke with a 90° rotation of the control handle. When rotated back to operating position, the original pressure setting is re-established
- Anvil yoke is adjustable on both sides of the axle support with thumb screws so the anvil wheel can be trued with the upper wheel



44F Assembled English Wheel (includes 2.5", 3.75", 6.0", 12.0", 24.0" radii and flat anvil wheels) **\$2,595.00**
44F U-Weld English Wheel Kit **\$1,595.00**



Constructed of cast iron, and featuring a generous 28" throat, this machine works for body panels, motorcycle fenders, aircraft parts and more! The toughest small-frame english wheel you can buy, the Imperial 28F provides ample working room for any contour, any job. With our large line-up of shaping wheels, you can even add the finest detail with finesse. Our latest design allows for our 2" wide upper wheel and anvils to be purchased and used for smaller jobs.

- Capacity of 16 gauge steel and 1/8" soft aluminum
- Features can be rolled into the center of an 88" panel
- Rigid cast iron frame provides a sturdy, vibration-free platform for your job
- Frame will withstand pressures of matching forming rolls to form hat, "Z" and lap sections
- Frame is shaped to facilitate clearance for panels both upward and downward contours
- Quick release cam on lower anvil.
- Height: 52"
- Width: 34"
- Standard working height: 45-1/4"
- Base: 16" x 26"
- Weight: approximately 500 lbs
- Upper wheel: 8" dia. x 3" wide 1045 steel forging polished to a 63 surface finish
- Anvil wheels: six wheels made from 1045 alloy steel as follows: 3" wide x 3" dia., radii: 2.50 R, 3.75 R, 6.00 R, 12.0 R, 24.00 R and Flat

Imperial 28F English Wheel **\$3,500.00**



The "Big Daddy" of English Wheels. Constructed of massive cast iron, and featuring an immense 44" throat, it lets you bend full body panels, muscle-car hoods or a flawless flared fender of up to 88" for your vintage roadster. The toughest English wheel you can buy, the Imperial 44F provides ample working room for any contour, any job. With our large line-up of shaping wheels in both 3" and 2" widths, you can even add the finest detail with finesse.

- Capacity of 16 gauge steel and 3/16" soft aluminum
- Features can be rolled into the center of an 88" panel
- Rigid cast iron frame provides a sturdy, vibration-free platform for your job
- Frame will withstand pressures of matching forming rolls to form hat, "Z" and lap sections
- Frame is shaped to facilitate clearance for panels both upward and downward contours
- Quick release cam on lower anvil.
- Screw lift and upper anvil wheel rotate 90 degrees for larger panels
- Anvil yoke is adjustable on both sides of the axle support with thumb screws so the anvil wheels can be trued with the upper wheel
- Height: 78"
- Width: 55"
- Standard working height: 50"
- Base: 24" x 36"
- Throat: 44"
- Weight: approximately 1,850 lbs
- Upper wheel: 8" dia. x 3" wide 1045 steel polished to a 63 surface finish
- Anvil wheels: six wheels made from 1045 alloy steel as follows: 3" wide x 3" dia., radii: 2.50 R, 3.75 R, 6.00 R, 12.0 R, 24.00 R and Flat

Imperial 44F English Wheel **\$9,000.00**

PROLINE PLANISHING HAMMERS



This portable planishing hammer is designed for forming or planishing light gauge sheet metal. The yoke is 22" deep and 12-3/8" from the bottom die to the bottom of the yoke. It comes with one top die and one each 3", 12" and 36" radii bottom die, a die extraction tool, oil and special oil bottle, stainless steel engraved die rack with grommets and regulator. The frame is powder coated. The unit is shipped with some assembly required.

Portable Planishing Hammer \$4,145.00

The lower arm on these cast iron floor models can be lowered to accommodate an optional bottom anvil for deep parts. Other special anvils are available, which allow the operator to move the lower arm off-center without losing position. They feature heavy duty pneumatic motors and sturdy cast iron frames.



24"
(Shown with optional die rack)

24" Cast Iron Floor Model Planishing Hammer \$7,245.00
36" Cast Iron Floor Model Planishing Hammer \$9,345.00



MITTLER BROS. PLANISHING HAMMERS

- Speed up custom sheet metal fabrication
- 12" or 24" throat
- Rear adjuster sets load force and allows for fast die changes
- Rugged tubular construction
- 9 radius dies included: Flat, 3/4", 1-1/2", 2", 3", 4", 6", 8", and 12"
- 4,600 hits per minute @ 100 psi
- Foot control allows for fine dual hand control

12" Benchtop Planishing Hammer (w/ 9 radius anvils) \$800.00
24" Benchtop Planishing Hammer (w/ 9 radius anvils) \$999.00

CONTOUR GAUGES

NEW!



12" Contour Gauge

When shaping metal, often complicated contours need to be duplicated. These two styles of gauges are the perfect way to ensure the new part is an exact copy of the old. The 12" sliding pin version helps model complicated shapes. The long snake-like gauges are perfect for long panels such as hoods, roof skins, fenders, airplane wings, and more. Each saves valuable time on projects and can be used over and over again.



37" Curve Template

12" Contour Gauge with sliding pins \$79.99
37" Curve Template \$49.99
107" Curve Template \$99.99

METAL SHAPING STATION



This ProLine metal shaping station is built for the professional metal shaper with the ultimate quality in mind. The powder coated base and upright stand are 29" tall for a comfortable working height once a tool is installed. A variety of tools can be utilized with the included adapters which fit into a Morse taper for a very solid feel. A quick release lever eliminates struggling during tool changes. The deluxe model features a nickel plated tool rack to keep things close at hand as well as an angle adapter for 90° and 45° mounting.

- Deluxe Shaping Station** (includes stand, tool rack, angle adapter, and 3 tooling adapters) **\$895.00**
- ProLine Package Shaping Station** (includes stand, tool rack, angle adapter, 3 tooling adapters, set of 3 body hammers, barrel mallet, bossing mallet, 12" shot bag and plate, set of tapered T-dollies, radius gauge) **\$1,827.00**

SLAPPERS



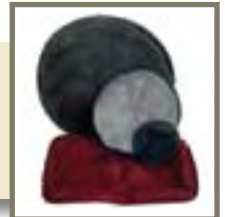
These slappers are great for forming material over a T-dolly or forming head. Their leather face protects the finish of the material and will be useful for a variety of metal shaping applications.

- Flat Face Slapper** **\$49.00**
- Curved Face Slapper** **\$49.00**
- Gentle Face Slapper** **\$49.00**
- Slapper Kit** (Includes three listed above) **\$145.00**

MALLETS AND SHOT BAGS



These high quality bossing mallets are made from a non-marring plastic and are offered in several sizes so you can select a hammer perfectly suited for the job at hand. Each mallet will form deep bowl shapes quickly and easily.



- Small Bossing Mallet** (right) **\$26.80**
- Medium Bossing Mallet** (left) **\$29.60**
- Large Bossing Mallet** (middle) **\$36.60**
- Bossing Mallet Kit** (Includes three listed above) **\$89.99**
- 6" Round Shot Bag** **\$20.00**
- 12" Round Shot Bag** **\$39.00**
- 18" Round Shot Bag** **\$53.00**
- 18" Rectangle Shot Bag** **\$65.00**

TAPERED AND STRAIGHT T-DOLLIES



Custom metal workers know that you can never have enough dollies. These Tapered and Straight T-Dollies allow for a variety of custom shapes to be created with consistency. Use them by hand, in a vice or in a metal shaping station. These T-Dollies will help to make your next project go together faster & more easily.



- Small Tapered Dolly** **\$105.00**
- Medium Tapered Dolly** **\$115.00**
- Large Tapered Dolly** **\$125.00**
- Small T-Dolly** **\$23.00**
- Medium T-Dolly** **\$29.00**
- Large T-Dolly** **\$36.00**



BULLSEYE PICKS

Originally designed for the collision/dent repair trade, bullseye picks also work very well for restoration projects. In our trade, custom metal shaping & fabrication, they are ideal for the fabricator who needs to metal finish the area surrounding a weld seam on fabricated body work.

- Metal Finishing: Bullseye picks make it easy to accurately repair dents like a professional. The open sight (similar to a gun sight) allows the user to strike a series of very accurate, light blows to raise low areas.
- Return Spring: Allows you to hit quickly, with the advantage of knowing where the pick (or blunt tip) will strike.
- Designed for use in hard-to-reach areas: such as around braces, gussets and other blind areas.

15" Reach Bullseye Pick	\$89.95
25" Reach Bullseye Pick	\$99.95

EDUCATIONAL BOOKS

Educational fabricating books from top authors are a great learning aid. Books by Tim Remus, Richard Finch, and Ron and Sue Fournier will be referred to over and over again. Excellent insight, lots of pictures, and many helpful tips will guide you in your journey to be a master metal shaper.



Fournier

Metal Fabricator's Handbook (175 pages)	\$19.95
Sheet Metal Handbook (144 pages)	\$19.95
Welder's Handbook (160 pages)	\$19.95

Remus

Ultimate Sheet Metal Fabrication (144 pages)	\$24.95
Advanced Sheet Metal Fabrication (144 pages)	\$27.95
Sheet Metal Fabrication Basics—Biker Basics (144 pages)	\$27.95
Advanced Custom Motorcycle Assembly & Fabrication (144 pages)	\$27.95

EDUCATIONAL VIDEOS



Ron Fournier and Ron Covell bring over 70 years of combined experience to their viewers. These videos cover a variety of topics ranging from gas welding techniques and hammer forming to the tools required to do the job.

Fournier

Hammerform Techniques DVD (76 min)	\$40.00
Metal Shaping: Blocking and Smoothing DVD (90 min)	\$35.00
Bucks, Patterns, and Forms DVD (60 min)	\$30.00
How To Gas Weld Aluminum DVD (60 min)	\$30.00

Covell

English Wheel Techniques DVD (86 min)	\$40.00
Basic Techniques for Working with Steel DVD	\$40.00
MIG Welding Made Easy DVD	\$40.00
Scratch-Building a Fender DVD	\$40.00
TIG Welding Basics DVD	\$40.00
Advanced TIG Welding DVD	\$40.00
Chopping & Sectioning DVD	\$40.00
Shaping Aluminum with Hand Tools DVD	\$40.00
Making Motorcycle Gas Tanks DVD	\$60.00
High Power Metal Shaving Workshop DVD	\$40.00



MULTITOOL BELT & DISC GRINDERS



"The Ultimate Finishing Tool"

The Multitool belt and disc grinding attachments for your bench grinder are must-have tools for any fabricator! These versatile tools remove material up to 5 times faster than with the equivalent grit grinding wheel. Belts change in seconds from grinding to sand deburr or polish. Quality construction is backed by a 3-year warranty. The attachments are all available with motor options to suit the hobbyist or the professional. Includes 1-80 grit belt.



362



482



8CW



484

MT362 Multitool Grinder Attachment (2"x36" belt)	\$199.95
MT362-100 Multitool Grinder (2"x36" belt, w/ JET 1 hp grinder)	\$419.95
MT482 Multitool Grinder Attachment (2"x48" belt)	\$279.95
MT482-100 Multitool Grinder (2"x48" belt, w/ JET 1 hp grinder)	\$499.95
MT8CW Multitool Grinder Attachment (2"x48" belt)	\$349.95
MT8CW-100 Multitool Grinder (2"x48" belt, w/ JET 1 hp grinder)	\$569.95
MT484 Multitool Grinder Attachment (4"x48" belt)	\$329.95
MT484-100 Bundle Multitool Grinder (4"x48" belt, w/ JET 1 hp grinder)	\$549.95



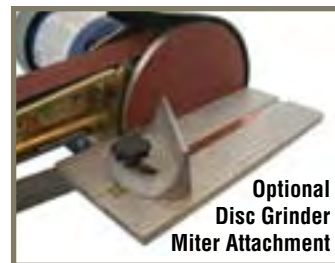
Floor Pedestal

OPTIONS

Grinder Floor Pedestal	\$77.25
Wall Mount Grinder Pedestal	\$145.00
Disc Grinder Miter Attachment	\$74.95



Wall Mount Pedestal



Optional Disc Grinder Miter Attachment

RADIUSMASTER



The RadiusMaster is a patented belt grinding machine that outperforms all other general purpose belt grinders. It offers higher performance, more convenience, plus greater versatility and durability than general purpose machines. The RadiusMaster offers a combination of features never seen before on one tool! No accessory tools required to change wheels, tilt, swing away guards or change belts. Small wheel selection can run continuously unlike the competition!

- 5 contact wheels, 3/4", 1", 1-1/2", 3-1/2", and 8"
- Polyurethane wheels ground flat for precision finishing
- Tilts on the side to be used as a bobbin grinder, also great for pipe notching
- Fully sealed bearings
- Belt size: 48" x 2"
- Belt speed: 3600 feet per minute
- 1.5 hp, 110v (overload protected)
- Operator lock-out switch



RadiusMaster (includes 5 belts & pedestal) **\$2,195.00**

BELT AND DISC GRINDERS

These two combination belt grinder / disc grinders are easy to operate and versatile. Each unit gives fast, efficient grinding and finishing. Both items are 115v for maximum portability. Backed by an excellent warranty from JET, it will become a highly used machine in any shop.

J-4200A Industrial

- 6" x 48" belt operates at any angle
- 12" disc w/ tilting table
- 1.5 hp UL/CSA approved motor
- Aluminum miter gauge
- Adjustable cast iron platen
- Removable upper guard for contour finishing
- Variable position locking, from vertical to horizontal and all angles in between
- Adjustable dust deflector and chute
- Enclosed drums and guarded belt
- One piece steel stand

J-4210K

- 6" x 48" belt
- 10" disc w/ tilting table
- 1 hp motor
- Miter gauge
- Adjustable cast iron platen
- Quick release belt tension
- Dust collection shrouds on belt and disc
- One piece steel stand protects motor
- Removable safety key switch



J-4210K Combination Grinder (115v) See Website for Promo Pricing! ~~\$899.00~~
J-4200A Industrial Combination Grinder (115v 1 ph) (other voltage available, call for details) See Website for Promo Pricing! ~~\$2,009.00~~

BURR KING

The Burr King name speaks for itself! These popular 3-wheel grinders feature slack contour belt grinding as well as contact wheel and workrest grinding. Standard units are wired for 110v, also available in 220v power and a host of options. Best quality and widest range of options!

If you are looking for a particular durometer contact wheel, variable speed, or special voltage application, call us! We will be glad to accommodate your needs.

- | | |
|---|---|
| <ul style="list-style-type: none"> • Cast frame • Precision machined components • Belt guard • Quick belt change & tracking • Cord and switch included | OPTIONS <ul style="list-style-type: none"> • Variable speed • 220v configurations • Dust collection • Pedestal |
|---|---|

482 Belt Grinder (2"x48" belt, 120v) **\$1,817.00**
760 Belt Grinder (1-1/2"x60" belt, 120v) **\$2,244.00**

Burr King's family of two wheel grinders provide vigorous contact wheel, workrest, and platen grinding in a frame design that pivots to ideal work positions. These machines are ideal for tool post grinders, roll grinders, and for fixturing into centerless grinding applications. Available in easily adjusted variable speed and aggressive single speed, plus two different belt widths. Like other Burr King models, you get the best quality and widest range of options!

If you are looking for a particular durometer contact wheel, variable speed, or special voltage application, call us! We will be glad to accommodate your needs.

- | | |
|--|--|
| <ul style="list-style-type: none"> • Contact wheel, platen, and work support grinding • Precision machined components • Positive belt tracking • Quick belt change • Up to 8000 SFPM belt speed standard • Cord and switch included • OSHA compliant, enclosed guarding | OPTIONS <ul style="list-style-type: none"> • Variable speed • 220v configurations • Mag starter • Dust collection • Pedestal |
|--|--|

960-250



960-250 Belt Grinder (2-1/2"x60" belt, 120v) **\$2,337.00**
960-400 Belt Grinder (4"x60" belt, 220v 1 ph) **\$3,266.00**

ADJUST-O ANGLE MAGNET



The Adjust-O Angle Magnet by StrongHand Tools is a must-have for any fabricator's shop. The tool is designed to hold flat, square, and round work pieces in any position from 30 to 275 degrees in 1 degree increments. The tool's 90 lbs. of force magnets feature an easily switchable on/off feature to make repositioning a breeze.

- V-Shape top and bottom to hold round and flat stock
- 30-275 degree rotation
- 90 lbs. of force magnet with on/off switch
- Built in bubble vial level
- Dimensions: 4-1/2" x 7-1/2" x 1-1/2"

MAV120 Adjust-O Angle Magnet \$256.95

ADJUST-O DUAL SWITCH MAGNETS

These small but powerful positioning magnets from StrongHand are the perfect accessory for any welder's or fabricator's shop. They feature durable steel construction, incredible holding capacity, and convenient on/off switches to make repositioning a breeze.

Constructed from steel, these tools feature a 90 degree square and convenient handle for repositioning material.



MS2-80 6" Dual Switch Magnet (78 lbs. of force) \$126.75
MS2-90 8" Dual Switch Magnet (150 lbs. of force) \$231.00

TUBE WELDING POSITIONERS



This tube welding positioner is a great tool for race car builders and tube fabricators. It can be adjusted to any angle and will securely hold your parts for tack welding without magnetizing.

This simple tool can save hours of frustration when working with coped tubes. (Actual tool has black oxide coating)

TC1 Tube Welding Positioner (1"-2" OD) \$38.95
TC1 Tube Welding Positioner Buy two and save!! \$69.95
TC2 Tube Welding Positioner (2"-3" OD) \$45.95
TC90 90° Fixed Tube Welding Positioner (1"-2" OD) \$26.00
TCKit Tube Welding Positioner Kit (Set of 4 includes 2-TC1s, 1-TC90, and 1-TBH) \$119.95

CAST IRON CLAMPS

- Heavy cast iron construction
- Copper plated ACME thread spindle
- Machined jaws and bases
- Slotted holes for bench mounting
- Rear jaw swivels and is self centering for holding different size work pieces

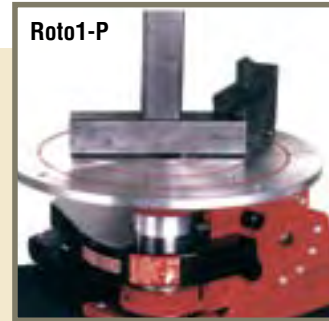


Model	Max. Opening	Jaw Height	Length	Weight	Price
WAC22	2.21"	1.28"	3.54"	8.8 lbs.	\$48.15
WAC34	3.75"	1.38"	4.80"	11 lbs.	\$58.85
WAC35D*	3.75"	1.38"	4.80"	11 lbs.	\$84.53
WAC45*	4.75"	1.38"	5.32"	23.2 lbs.	\$117.70
WAC35SW*	3.75"	1.38"	4.80"	25 lbs.	\$176.55

* Deluxe models include quick acting screw adjustment

ROTARY WELDING POSITIONERS

The Roto Star welding positioners are a must for precision welding. These heavy duty units were designed to increase productivity and improve quality for a variety of applications. They can be ordered with a standard 3 jaw chuck with thru-hole and 250 lbs. of capacity, or a surface plate for fixturing work pieces. They are adjustable from 0° to 90° by 15° increments and feature a 300 amp double grounding system which eliminates feedback during high frequency welding. A reversible variable speed control unit and foot pedal allow hands free operation. Optional accessories include variable speed foot pedal, adjustable idler roller assembly and arm rest.



- Roto1** (w/ 6" chuck) **\$2,195.00**
- Roto1-P** (w/ 12" surface plate) (add \$300 for variable speed) **\$1,795.00**
- Roto3** (w/ 8" chuck) **\$2,795.00**
- Roto3-P** (w/ 16" surface plate) (add \$400 for variable speed) **\$2,395.00**

Specifications	Roto Star 1	Roto Star 3
Chuck	6" 3 Jaw	8" 3 Jaw
Max. Swing @ 0°	16"	20"
Vertical Weight Cap	200 lbs.	250 lbs.
Horizontal Weight Cap	100 lbs.	150 lbs.
Thru Spindle Cap	1-1/2"	2-1/2"
Spindle Rotation	360°	360°
Spindle Speed	0-15 rpm	0-16 rpm
Angle Adjustment	15° increments	15° increments
Grounding Cap	300 amp	300 amp
Voltage	110 or 200 v	110 or 200 v
Shipping Weight	60 lbs.	90 lbs.
Optional Table	12" dia.	16" dia.

BUILDPRO TABLES

The Build Pro welding table by StrongHand Tools is one of the most adaptable welding and fixturing tables on the market today. The modular design allows the precision ground and CNC machined top plates to be reconfigured to extend the width of the table for larger projects. The table is also easy to set-up and tear down, saving valuable work space. The BuildPro will help you decrease fixture set-up time, and increase work efficiency.

- Heavy duty leveling feet
- 1-3/4" spacing between plates
- Table flatness of .004"/ft
- Hole diameters of .625"
- Hole spacing of 2.00"
- Plate thickness of .625"



- 3'x4' Standard Table** **\$2,100.00**
- 3'x4' Nitrided Table** **\$2,600.00**
- 3'x6-1/2' Standard Table** **\$3,300.00**
- 3'x6-1/2' Nitrided Table** **\$4,100.00**

NOMAD WELDING TABLE



The Nomad Portable Welding Table is the perfect solution for home fabricators limited on shop space or fabricators in the field who need a small portable table to take to the jobsite. The table features a heavy 14 gauge steel top and a frame capable of supporting up to 350 lbs. A connector plate is also available for joining two tables together for larger jobs.

- Heavy 14 ga 20" x 30" top with 350 lb load capacity
- Three 1.1" slots in the tabletop allow for insertion of clamps to reach any point on the table
- Tabletop tilts to three positions: Horizontal, 30°, and folded for mobility and storage
- Includes two retractable, perpendicular steel guide rails which can be used as guides, stops, or clamping edges
- Height adjustable from 26" to 32"
- Includes two heavy casters for portability

- Nomad Welding Table** **\$156.75**
 - Nomad Deluxe Kit** **\$220.75**
- (Includes: Nomad Welding Table, (2) UBV45 Magspring Clamps, (1) MS346C Multi-Angle Magnet, (1) MS346A Mini Magnet, (2) XDV4 Adjustable Magnetic V-Pads)



MITTLER BROS. POWER DRIVE BEAD ROLLER



- Designed to handle .040" mild steel (20 ga.), .050" aluminum
- Available in 24", 36" & 42" throats
- Largest selection of heat treated rolls to choose from
- Adjustable depth of bead
- Variable speed foot control for hands free operation (powered units)
- Oilite bushings at all rotation points for long life
- Heat treated gears for years of trouble free operation
- 1-1/8" throat opening for "Bend, then Bead" operation
- Forward and reverse switch for left or right side operation (powered units)
- Upgraded motor available for 16 ga. applications
- Industrial finish for good looks and durability



24" (billet aluminum)



Roll Holder



Stand

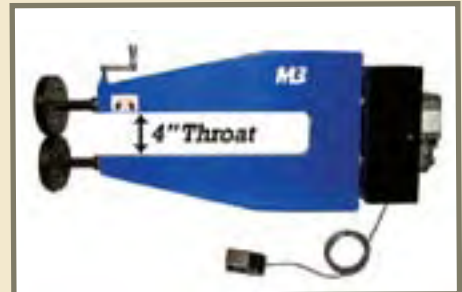
24" Deep Throat Manual Bead Roller . . .	\$399.00	Roll Holder	\$75.00
24" Deep Throat Power Roll	\$650.00	Depth Stop	\$75.00
36" Deep Throat Power Roll	\$795.00	Standard Shape Rolls	\$65.00
42" Deep Throat Power Roll	\$995.00	1" Bead (per set)	\$85.00
Industrial Motor Upgrade	\$800.00	Crimp Rolls (per set)	\$180.00
Standard Bead Roller Stand	\$90.00	Blank Rolls (per set)	\$35.00
Rolling Bead Roller Stand	\$150.00	Edge Bead Rolls	\$65.00

Rolls Available In Heat Treated Steel or Nylatron (Used for scratch resistance)

HIGH THROAT BEAD ROLLER

This new version of the popular Mittler bead roller allows the beading of high crown panels or pan shaped pieces, in addition to flat sheet metal. This unit comes standard with a variable speed electric motor and foot pedal controls. An upgraded motor option is available for beading 18 and 16 ga mild steel.

- Variable speed foot control
- Forward/Reverse switch
- 4" tall throat
- Includes 1 standard roll set
- .040" mild steel or .050" aluminum capacity
- Upgraded motor available for 16 ga applications



24" Throat Model.	\$795.00
36" Throat Model.	\$950.00
Standard Roll Sets	\$95.00
High Crown Roll Sets	\$180.00

See a full selection of rolls on our website

LARGEST SELECTION OF ROLLS TO CHOOSE FROM

1/8" BEAD	3/16" BEAD	1/4" BEAD	5/16" BEAD	3/8" BEAD	1/2" BEAD
1" BEAD	1/8" FLAT	3/16" FLAT	1/4" FLAT	5/16" FLAT	3/8" FLAT
1/2" FLAT	FULL RADIUS TANK ROLL	TANK ROLL	STEP ROLL	1/8" STEP ROLL	45 STEP
SPOILER ROLL	BODY LINE	SHEAR	ADJUSTABLE DEPTH STOP	1/8" PIN STRIPE	LOUVER LINE
<small>13/16" Radius 40 Degrees Lays on 1-5/8" Tube</small>		<small>\$75 Each</small>	<small>\$75</small>	<small>\$110 Each</small>	<small>\$110 Each</small>
				<small>(7/8" Center to Center Bead)</small>	<small>(Form Up to .040 Aluminum)</small>

EDGE BEAD ROLLS

Built in edge guide makes a tough job easier. Designed to roll a strengthening bead around the edge of the panel, also works good for wheel well openings!

1/8" BEAD	3/16" BEAD	1/4" BEAD	5/16" BEAD	3/8" BEAD	1/2" BEAD

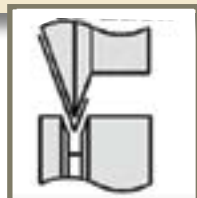
HEM ROLLS

Hem Rolls (set of three) \$160.00

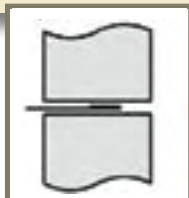
Make edges on rounded wheel-well openings as well as straight edges stronger, safer and more professional in appearance with Hem Rolls. This easy, three-step process creates hem rolls approximately 1/4" deep on steel or aluminum up to .040" without marring pre-painted aluminum. All rolls are heat-treated for lifetime service.



Step 1
Metal is formed 90°



Step 2
Metal is formed 140°



Step 3
Metal is rolled flat

TUBE BEAD ROLLS

- Rolls a bead so hoses won't slip off
- Ideal addition to the bead roller
- Rolls down to 1" OD x .050" wall

Standard Tube Bead Rolls . . . \$115.00



PORTABLE EXPANDERS



Expand, bead or end form anywhere you want. The Huth 1690 machine is a compact design allowing it to fit on your bench-top, while the foot pedal gives you hands-free operation. The 1691 model gives you the added flexibility of a rolling cart. For those jobs that require fitting tubing under a vehicle or in a remote area, ask us about the 1685 hand-held unit that only requires shop air. Each unit is equipped with tooling as shown for expanding 1-1/2" to 3-1/2" material. Optional tools allow expansions in 1" to 5-1/2" tubing. Each equips you to form ball joints, slip joints, flanges and more with optional tools, anywhere in your shop. We also have a larger rolling version with swager box.

- 1690 Benchtop Expander \$3,025.00
- 1691 Portable Expander on cart. \$3,085.00

EXPANDER/REDUCER/SWAGER

Swage, reduce, end form, flare, or expand tubing anywhere you want. Mounted on its own easy-wheeling cart, Huth's portable pipe expander/reducer/swager equips you to reduce, flare, or expand tube or pipe ends.

- Portable design includes heavy duty wheels and front swivel caster with brake
- Clear safety guards for increased protection during all operations
- Includes a 20' power cord
- Great for end forming mild steel, aluminum, stainless steel, black pipe, tubing, and tube
- Huth's tube end forming and pipe expander/reducer/swager is made in America
- Powerful 5 hp motor, 240v 1 ph (30 amp), or 3 ph (20 amp)
- This tubing expander / steel pipe reducer has 25,000 lbs. of expanding power
- Automatic preset expanding system allows precise expanding every time
- Open cart area provides a convenient work surface
- Tubing expanding capacity is from 1" up to 5-1/2" ID
- Tube swaging, reducing, and flaring capacity is up to 3" OD
- Includes collet holder for 1" up to 2-1/2" OD tubing, and adjustable collar for expanding 1" to 3-1/2" tube



- 1673 Expander/Reducer/Swager \$4,412.00

ROTARY MACHINE



This Pexto 622 forming machine offers a broad variety of shapes and capabilities in forming sheet metal for a combination of uses: beading, crimping, double seaming, turning, burring, wiring, elbow edging, flanging, and flattening. The 622 Series is equipped with the addition of a 7" deep throat for additional forming capabilities. (24 gauge mild steel capacity). The 622 includes 5 sets of rolls and gauges, or may be ordered without rolls as the 622LR.

- 622 Pexto Rotary Machine (includes Pexto 622, bench mounting base, and rolls). \$1,065.00
- 622LR Pexto Rotary Machine (less rolls). \$877.00
- Bead Form Boss Roll Set (for tube beading with Pexto 622 or Tennsmith R22 machines) \$179.00



BEAD FORM TOOLS

Bead Form quickly forms hose beads on all types of tubing. Positive action gear drive and 8620 steel form rollers make this tool very durable. It works on steel, aluminum, copper, or brass up to .050" wall thickness. The hand crank can be removed and replaced with a ratchet and 1/4" square socket. Can be vice or bench mounted with the included bracket and even comes with a handy carrying case. Great for fuel and radiator lines.

- Bead Form Jr** (5/16"-1/2" OD) is designed for .028" wall tubing (produces a bead approximately .025" tall) **\$489.00**
- Bead Form 1/2** (1/2" OD) popular w/ refrigeration and vacuum fabricators **\$489.00**
- Bead Form I** (5/8"-2" OD) (produces a bead approx. .050" tall x .185" wide) **\$419.00**
- Bead Form I HD** (same as above w/ replaceable bushings and heat treated shaft) **\$469.00**
- Bead Form II** (1-1/2"-4" OD) (produces a bead approx. .080" tall x .270" wide) **\$419.00**
- Bead Form II HD** (same as above w/ replaceable bushings and heat treated shaft) **\$469.00**
- Bead Form III** (1-1/2"-4" OD, for .065" material) (produces a bead approx. .080" tall x .270" wide) **\$529.00**

BEAD FORM ELECTRIC

New electric model features a high quality 1/6 hp gear motor and is mounted on a rubber isolated aluminum plate. A foot pedal control makes production work much quicker and easier. The electric option is available as a complete unit or as an upgrade to an existing bead form tool.



- Bead Form Electric Upgrade** (utilize your existing bead form tool) **\$1,270.00**
- Electric Bead Form I HD** (5/8"-2" OD) **\$1,720.00**
- Electric Bead Form II HD** (1-1/2"-4" OD) **\$1,720.00**
- Electric Bead Form III** (1-1/2"-4" OD, for .065" material) **\$1,780.00**

INDUSTRIAL TUBE BEADING MACHINE

Designed with the 16 gauge tubing application in mind, this machine will bead the end of your mild steel, aluminum, and stainless applications. Great for cold air intakes, turbo, and large diameter hose applications.

- Produces approx. .250" wide bead x .090" tall
- .065" stainless, 4130, and aluminum capacity
- Standard bead depth of 5/8" from edge of tube (up to 1-1/4" deep)
- Forward & reverse switch
- 3/8" fabricated construction
- 14" throat for optional sheet metal work
- Needle bearings
- Keyed shafts
- Heat treated gears for long life
- Variable speed
- Fully welded
- Includes stand



- Industrial Tube Bead Roller, Stand, and Complete Roll Set** **\$3,425.00**

ULTIMATE TUBING NOTCHER



V-Block Vise Design Means Minimum Set-up Time

1 HP Standard (1.5 HP Variable Speed Optional)

115v Operation (220v Optional)

Rugged Construction 350 lbs.

New Heavy Duty Swivel Base

Calibrated Swivel Vise Allows ANY Angle Setting. Does NOT Clog with Chips!

Lifetime Sealed Bearings

130 RPM Standard 75-250 RPM Variable Speed

End Mill Design Allows Fast Metal Removal

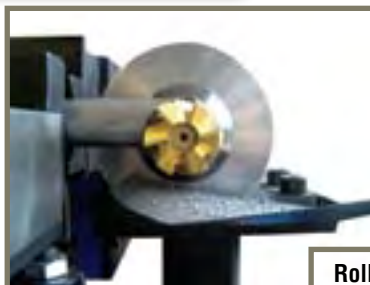
Notches up to 2-1/2" Diameter Tubing

Don't Be Fooled By Look Alikes!

The MB Ultimate Tubing Notcher has been a favorite in fabrication shops for many years. Operation is simple; just clamp your tube in the calibrated swivel vise that allows for accurate and repeatable positioning at any angle. A compound feed table advances tubing into the milling cutter, producing a perfect notch and a perfect fit—every time.

END MILL CUTTERS – 1-1/4" SHANK

Tubing	Pipe Size	Tin Coated
2-3/8"	2"	\$495.00
2"		\$280.00
1.90"	1-1/2"	\$265.00
1-3/4"		\$260.00
1.66"	1-1/4"	\$240.00
1-5/8"		\$215.00
1-1/2"		\$185.00
1-3/8"		\$175.00
1-1/4"	1"	\$150.00
1-1/8"		\$135.00
1"		\$110.00
1"	High Helix	\$165.00
7/8"		\$90.00
7/8"	High Helix	\$150.00
3/4"		\$65.00
3/4"	High Helix	\$115.00



* Adapter Bushings \$45.00 Each

- Standard Ultimate Tubing Notcher** (max capacity 3/4" to 2" tubing, 115v) **\$3,895.00**
- Variable Speed Ultimate Tubing Notcher** (max capacity 3/4" to 2" tubing, 115v). **\$4,360.00**
- Double Sided Variable Speed Ultimate Tubing Notcher** (max capacity 3/4" to 2" tubing, 115v) **\$5,700.00**
- Offset Vise Option** (allows offset notching of tubes). **\$325.00**
- Upgrade Vise Option** (allows notching of tubes up to 2-1/2" OD) **\$325.00**
- Ultimate Tubing Notcher Stand** (cabinet provides space for safe storage of spare cutters) **\$350.00**
- Ultimate Tubing Notcher Work Light** (magnetic base, 25W halogen focused light, 25" flexible neck). **\$125.00**

ABRASIVE NOTCHING MACHINE



TN-400

These high speed heavy duty abrasive notchers are designed for making very fast and accurate notches in up to 3" OD material at up to 60° angles. Perfect for thin and heavy wall tubing alike, these machines are a great fit for race car fabricators, handrail builders, and job shops. Mandrels of virtually every size are available and changing them out is a simple process that can be completed in seconds. Belt life is generally around 100-200 copes per belt, depending on material.

- Fine tune adjustment for belt tracking
- Offset notching adjustment standard
- Urethane coated drive wheel for maximum belt traction
- Can be set up with a stop for production notching of the same piece



Technical Data	Standard	Heavy Duty
Belt Size	4" x 79"	6" x 79"
Motor	3.0 hp	5.0 hp
Capacity	3/4"-3"	3/4"-3"
Belt Speed	5,400 fpm	5,400 fpm
Weight	430 lbs.	517 lbs.
Size	59"l x 47"h x 19"w	59"l x 47"h x 19"w



TN-600

- TN-400 Abrasive Notching Machine (220v 1 ph) \$4,795.00
- TN-600 Abrasive Notching Machine (220v 1 ph) \$5,895.00
- Mandrels \$107.00 ea
- 4" 24 grit Premium Grinding Belts for NJYAL100 (sold in box of 10) \$210.00
- 6" 24 grit Premium Grinding Belts for NJYAL150 (sold in box of 10) \$350.00

TN-800 NOTCHER

The TN-800 tubing notcher has an operator adjusted eccentric path that requires only one cutter to notch weld joints on tubing, pipe, or solids with outside diameters of 1" to 3". This unique feature means the TN-800 tooling cost savings are ongoing. Notching under 1" is achieved by installing an optional 1/2" cutter and adapter bushing.

- Create perfect weld joints in chrome moly, mild steel, stainless steel, and aluminum pipe or tubing
- Does not contaminate the weld joint, offering more strength in the weld
- Unmatched versatility, mobility, and easy operation. Our pipe notcher is capable of notching up to 60° in either direction
- Cross slide table, angle vise, and V-Jaws can be independently calibrated allowing accurate positioning of straight, angled, or offset notches
- Quick changeover for different diameters of tube
- Ruggedly built stand with large wheels and casters allows for easy mobility



- TN-800 Tubing Notcher (110v, 1 ph, 15 amp) \$7,495.00

HOLE SAW TUBE NOTCHERS



JMR

TN1000

The JMR Tubing and Pipe Notcher is the highest quality hole saw notcher on the market. It is manufactured from bar stock, not plate, to increase strength and has a 1.125" induction hardened shaft supported by Timken™ bearings. The custom designed shaft seals prevent bearing and shaft damage and the shaft accepts replaceable hole saw mounting threads.

Angle changes can be made easy due to a Timken™ thrust bearing at the pivot point to increase clamping force while reducing wrench pressure. Use it for prototyping or production work.

TN1000 High Capacity Hole Saw Tubing Notcher Includes free shim kit for offset notching! **\$595.00**
TN1000 Vise Mounting Block (use for mounting in a vise or making your own stand, comes w/ mounting bolts) **\$19.99**

The TN-250 is one of the most versatile hole saw notchers on the market today. The unique radial vise clamping system allows for clamping tubing from 1" to 2.5" OD in any location, including the center of a bend. Hole saws are supported on a massive 1-1/4" OD shaft, which also includes a replaceable hex insert for attaching to a standard 1/2" drive drill. Offset copes of up to 1" can be accomplished by raising or lowering the cutter assembly.

BAILEIGH



TN-250

- Capacity of 1" to 2.5" OD
- 230° of angle adjustment
- All CNC machined
- Radial vise clamping system allows for clamping in the center of a bend
- Can offset notch up to 1" vertically
- 1-1/4" Ground & Polished Stainless Steel shaft
- Sealed needle bearing shaft support
- Easy mounting: Bolt or clamp it to a table or simply clamp it in a vise
- Requires an ordinary 1/2" hand drill.



TN-250 Tubing Notcher **\$595.00**



JD SQUARED

TN-100

The JD2 TN-100 notches 3/4" through 2" OD tubing at angles up to 50°.

- Easy to use — it may be mounted in a drill press or simply clamped in a vise and used with a 1/2" hand drill.
- Heavy duty frame — Entirely CNC machined, the frame is made from 1/2" thick 6061-T6 aluminum and its face has been milled flat. The degree increments are then machined directly into the frame so they can't wear off. An all position swivel base ensures easy setup.
- Rigid bearing block — The TN-100's bearing block uses twin needle bearings and separate grease seals for maximum rigidity and reliability. A 3/4" ground and polished stainless steel shaft eliminates flex and vibration.
- Strong, accurate tube cradle — The entire cradle and clamp assembly have been CNC machined out of a solid steel block. The adjustable V-block allows the tube to be notched exactly in the middle. This eliminates the problems of tube walk in notchers that use a U-strap.

TN100 Tube Notcher **\$215.00**

The Notchmaster is for the builder who needs quick offset copes in tubing up to 3" OD! This design from JD2 is a large capacity, offset-capable addition to the popular JD2 TN-100 tube notcher. The heavy duty steel frame holds a two-axis adjustable tubing clamp, and the ground and polished stainless shaft can be easily adjusted for offset coping. As with the TN-100 unit, the Notchmaster shaft is supported by sealed needle bearings. Using bi-metal hole saws to make the cut, this is an economical way to cope those tough applications!

- Capacity of 3/4" to 3" OD
- Angles up to 50°
- All CNC machined
- Heavy duty 1-1/4" thick steel frame
- 2-axis adjustable tubing clamp
- Can offset notch up to 1-1/2" vertically
- 1" ground & polished stainless steel shaft
- Double sealed needle bearings
- Easy mounting: bolt or clamp it to a table or simply clamp it in a vise
- Uses inexpensive bi-metal hole saws
- Requires an ordinary 1/2" hand drill



Notchmaster

JD2 Notchmaster Tubing Notcher **\$249.00**

MORE NOTCHING OPTIONS

Manual pipe notchers are useful when repetitive operations are required. These industrial quality machines are available only in pipe sizes and for a 90 degree notch.

- Low cost
- Quick and easy
- Portable
- Mounts to any stationary surface
- Notches up to schedule 40



NJYAL3 (1-1/4" and 1-1/2" pipe sizes)	\$895.00
NJYAL2 (1-1/2" and 2" pipe sizes)	\$895.00
NJYAL1 (3/4", 1" and 1-1/4" pipe sizes)	\$695.00
NJYALU (manual vent notcher)	\$795.00

NOTCH TOOLING



- Built to fit in a press or ironworker (pg 10)
- Angle notch units available, call with application
- Larger sizes available as well as punching, slotting or shearing

1000 Series Tooling Set (housing)	\$269.00
1000 Series Die Sets	\$362.00-\$464.00 ea.

PIPEMASTERS



PipeMasters are the perfect companion to any of our notchers. These timesavers will easily pay for themselves when fitting tube or pipe together. Individual sizes will slip over the tube with a .020" clearance or can be used free hand. The steel pins contour to the shape desired which can be transferred to the work piece. Kits come in a foam lined carrying case. Call for sizes not listed.

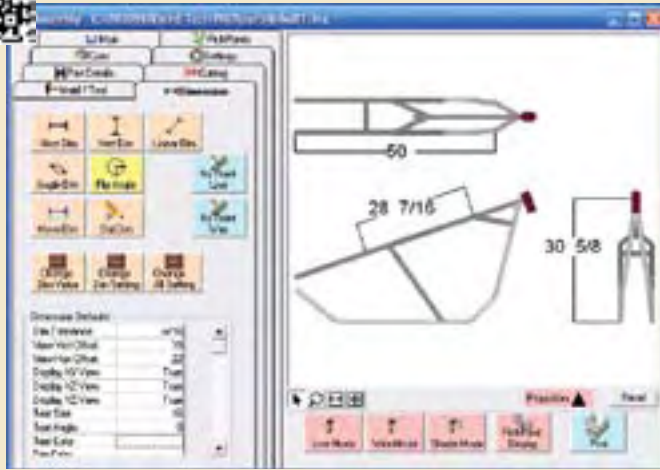


P/N	Tube Size	Price
PT075	3/4"	\$40.00
PT0875	7/8"	\$41.00
PT100	1"	\$42.00
PT1125	1-1/8"	\$43.00
PT125	1-1/4"	\$44.00
PT1375	1-3/8"	\$49.00
PT150	1-1/2"	\$49.00
P125	1-5/8"	\$49.00
PT175	1-3/4"	\$54.00
PT200	2"	\$56.00
PT250	2-1/2"	\$128.00
PT300	3"	\$133.00

P/N	Nominal Pipe Size	Pipe OD	Price
P100	1"	1.315"	\$43.00
P125	1-1/4"	1.660"	\$49.00
P150	1-1/2"	1.900"	\$56.00
P200	2"	2.375"	\$57.00
P250	2-1/2"	2.875"	\$110.00
P300	3"	3.500"	\$115.00
P400	4"	4.500"	\$172.00
P500	5"	5.563"	\$190.00
P600	6"	6.625"	\$292.00

P-SC PipeMaster Stock Car Kit (1-1/2", 1-3/4")	\$103.00
P-TJ PipeMaster Truck & Jeep Kit (1-3/4", 2")	\$110.00
P-DR PipeMaster Dragster Kit (1-1/2", 1-5/8")	\$98.00
P-PRKit PipeMaster Pro Racer Kit (1", 1-1/4", 1-1/2", 1-3/4", 2")	\$245.00
PT-2Kit PipeMaster Master Builder Kit (11 sizes, 1/8" increments, 3/4"-2" OD)	\$553.00
P-1Kit Nominal Pipe Size Kit (1", 1-1/4", 1-1/2", 2" pipe)	\$205.00

TUBE BENDING DESIGN & LAYOUT SOFTWARE



Bend-Tech offers tube bending software solutions for everyone from the hobbyist to the professional fabricator. Using the finished part dimensions, this software calculates how long to cut your tube as well as where to start each bend regardless of your bender type. This can save hours of calculating and reduce wasted material. Each version contains several common templates for nearly any application.

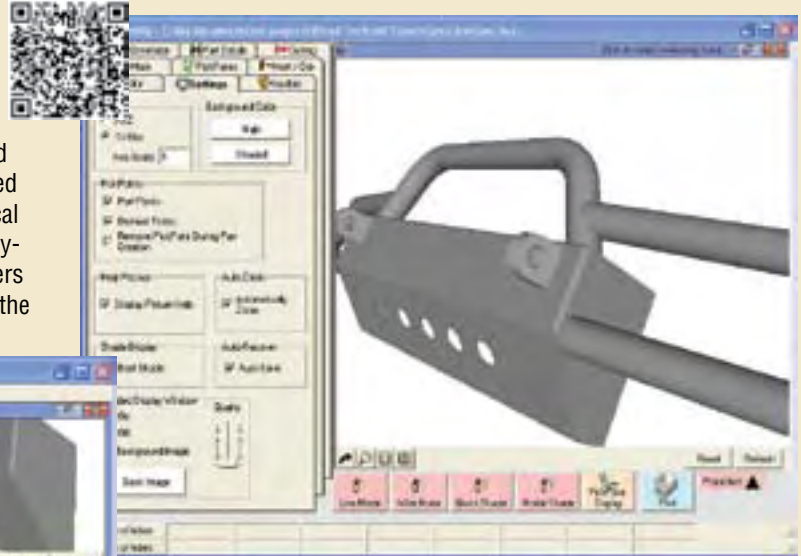
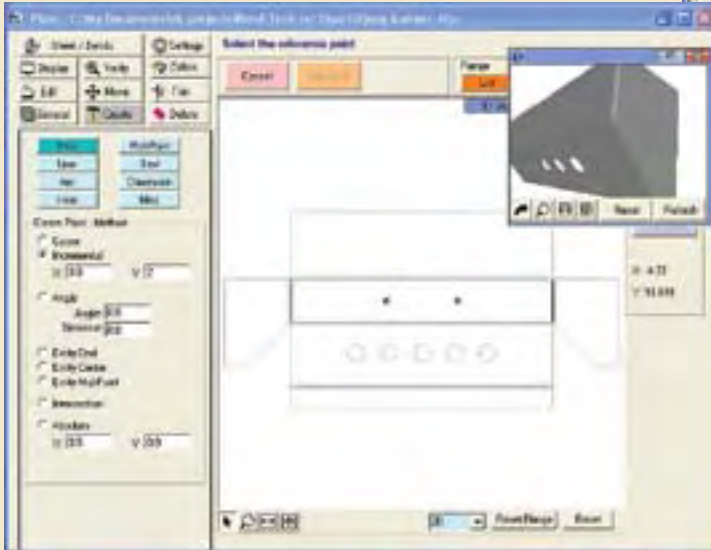
With Bend-Tech SE, users have the option of sketch mode for drawing custom parts as well as X,Y, Z dimensional input. You can even view and rotate a three dimensional model of the finished part and watch a simulation of how it will bend on your specific bender. Whether you are a first time fabricator or a seasoned pro, Bend-Tech Software can easily pay for itself in the first use.

Features	EZ	EZ-3D	Bend-Tech Pro	Bend-Tech SE
Designed for:	home hobbyist	home hobbyist	small business/manual bender	commercial use /programmable bender
Customizable Tooling Library	✓	✓	✓	✓
Customizable Material Library	✓	✓	✓	✓
Standard Predefined Templates	✓	✓	✓	✓
Additional Templates Available for Download	✓	✓	✓	✓
2D Custom Part Template	✓	✓	✓	✓
Shaded Part Diagram	✓	✓	✓	✓
Cut Length & Weight Results	✓	✓	✓	✓
Bend Angle Results	✓	✓	✓	✓
Start, End, or Center Bend Results	✓	✓	✓	✓
Easy to Follow Printed Setup Sheet	✓	✓	✓	✓
Save Part Files to the Hard Drive	✓	✓	✓	✓
On-line Help w/ Index and Search	✓	✓	✓	✓
Telephone and Email Support	✓	✓	✓	✓
Support Forum	✓	✓	✓	✓
Bend Limit (per part)	6	6	10	50
3D Custom Part Template		✓	✓	✓
Tri-Star Input Window		✓	✓	✓
Zooming, Panning & Rotating of 3D Shaded Model		✓	✓	✓
Rotation of Results		✓	✓	✓
Reverse Bending Order		✓	✓	✓
Flip Tube in Mid Production		✓	✓	✓
Bending Simulation		✓	✓	✓
Movement Transition Setup Sheet		✓	✓	✓
Trig Calculator		✓	✓	✓
Advanced Calibration Wizard		✓	✓	✓
Assembly Design			✓	✓
Notching Module			✓	✓
Assembly Dimensioning			✓	✓
Millimeters and Inches			✓	✓
XYZ Interface			✓	✓
Sketch Interface			✓	✓
Multiple Radii for Single Part			✓	✓
Crowning (for roll bending)			✓	✓
Graphical Layout for Results			✓	✓
Fraction Chart			✓	✓
Angle & Rotation Output Tolerances up to 3 decimal places			✓	✓
LRA Output			✓	✓

Bend-Tech EZ	\$69.00
Bend-Tech EZ 3D	\$149.00
Bend-Tech Pro	\$275.00
Bend-Tech SE	\$399.00

SHEET METAL

Bend-Tech Sheet Metal is the latest development used for designing sheet metal parts and assemblies. This software approaches sheet metal design from an easy to understand 2D perspective, however final product models are presented in full 3D for review. Bend Tech Sheet Metal takes a practical approach to sheet metal design, and is by far the most easy-to-use sheet metal design product on the market. Customers who have never used a CAD system before are productive the first time they sit down to use it.



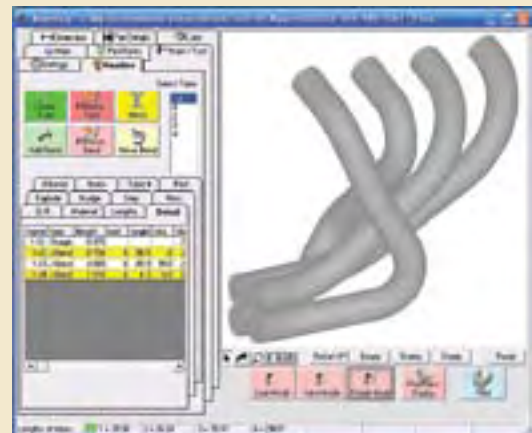
Bend-Tech Sheet Metal is designed for the serious hobbyist or small shop. It allows the user to export .DXF files for CNC cutting systems or printing templates, and also has the following features and capabilities:

- 2D CAD
- Bends / Flanges
- Flat Layout
- Drawing Dimpled Holes
- Path text for cutting text on CNC cutting systems
- Parts assembly
- Chamfer, Corner notch
- Material Library
- Layers
- Scale Printing
- Bolt-Hole Pattern

HEADER DESIGN

Bend Tech HD is a software tool that removes the trial and error from tube header manufacturing. Bend-Tech HD allows any user to be able to design his own tube headers in minutes, providing detailed step-by-step instructions where to cut and rotate each tubular segment. Bend-Tech HD is the only product in the world to help you design custom tube headers and break it down to fabrication instructions to use pre-bent mandrel tubing.

Bend-Tech HD was designed for the fabricator. It uses terms and technology that is easy to understand. Users do not need any CAD or sophisticated software experience. Designed to make the user feel comfortable with it in minutes, it will start saving you time and money immediately.



Bend-Tech Sheet Metal Software	\$275.00
Bend-Tech Header Design Software	\$275.00
Bend-Tech PRO Tube Bending Software with Sheet Metal Module	\$425.00
Note: Sheet metal software operates inside bending software	
Bend-Tech PRO Deluxe Tube Bending Software with Sheet Metal and Header Design Modules	\$425.00
Note: Sheet metal and header software operate inside bending software	
Bend-Tech SE Tube Bending Software with Sheet Metal Module	\$649.00
Note: Sheet metal software operates inside bending software	
Bend-Tech SE Deluxe Tube Bending Software with Sheet Metal and Header Design Modules	\$749.00
Note: Sheet metal and header software operate inside bending software	

MODEL 3 BENDER



The Original Model 3 Bender by JD2 is designed for the professional fabricator or hobbyist who requires a dependable, accurate and affordable tube and pipe bender. This machine can bend from 1/2" to 2" OD tubing manually because of the compound leverage from the ratcheting arm, and can be upgraded to hydraulic at any time. (For manual operation the Model 3 must be solidly attached to a fixture such as our Floor Pedestal) The Model 3's excellent bend quality is guaranteed to be as good or better than any bender on the market in the \$3,000 and under range. The Model 3 is the #1 selling bender in the U.S.A. to race car fabricators. Die sets sold separately.

- 2" OD capacity
- Mechanical or hydraulic
- Accurate bends to 180°
- Round & square tubing
- Easy operation
- Affordable



(shown with optional hydraulic kit)

- Model 3 Tubing Bender (w/ handle & degree ring)** **\$295.00**
Deluxe Model 3 Tube Bender Kit
 (includes bender w/ handle, degree ring, floor pedestal, and magnetic base pointer) **\$429.95**

MODEL 32 BENDER



The Model 32 tube and pipe bender is the latest design by JD Squared. Essentially a super heavy duty version of the original Model 3, this machine makes bending extremely heavy wall material possible. The JD2 Model 32 can bend from 1/2" to 2" x .120" wall tubing manually with little effort because of the compound leverage from the ratcheting arm and can be upgraded to hydraulic power at any time. With hydraulics the machine is capable of bending up to 2.5" OD material, including 2" x .250" wall DOM. (For manual operation the Model 32 must be solidly attached to a fixture such as our Floor Pedestal). The Model 32 bender is CNC machined from high strength cold rolled steel and holds up to daily use much better than look-alike benders. The die sets are equipped with replaceable alloy blocks which eliminate galling of steel tubing.

- 2.5" OD, 2" x .250" wall DOM, and 1.5" solid capacity when equipped with Hydraulics
- 2" x .120" and 1" solid capacity with manual operation
- Anti-springback mechanism standard
- 3/4" thick frame links, 1/2" thick drive links
- Accurate bends to 180°
- Round & square tubing
- All CNC machined surfaces
- Easy operation



Deluxe Model 32 Electric

- Model 32 Manual Tubing Bender (w/ handle & degree ring)** **\$395.00**
Deluxe Model 32 Manual Tube Bender Kit
 (includes bender w/ handle, degree ring, floor pedestal, and magnetic base pointer) **\$529.95**
Model 32 Hydraulic Tubing Bender (w/ degree ring & 10-ton hydraulic cylinder) (does not include pump or hose) **\$799.00**
Deluxe Model 32 Air/Hydraulic Tube Bender Kit
 (includes bender w/ degree ring, air/hydraulic pump, rolling floor pedestal, and magnetic base pointer) **\$1,484.00**
Deluxe Model 32 Electric/Hydraulic Tube Bender Kit
 (includes bender w/ degree ring, electric/hydraulic pump, rolling floor pedestal, and magnetic base pointer) **\$1,899.00**

MODEL 4 BENDER

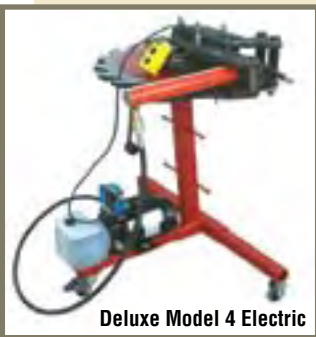


- Capacity up to 2-1/2" OD
- Easy setup and operation
- Hydraulic powered
- Durable heavy duty steel construction
- Self locking ratchet prevents material springback
- Large radius degree wheel
- Quick change dies
- High bending torque over 60,000 in./lbs.

The JD2 Model 4 bends up to 2" schedule 40 pipe, 2-1/2" outside diameter round tubing, solid hot rolled steel to 1-1/2" (38 mm) diameter, flats up to 3" (75 mm) wide x 3/4" (18 mm) thick hot rolled steel. It weighs 170 lbs. with the hydraulic cylinder. All links and frame are precision CNC machined from 3/4" and 1" thick steel. All pins are high strength steel.

The Model 4 employs a 10 ton single acting spring return cylinder with a stroke of 14".

It will typically bend 90° in two complete strokes and 180° bends require only four.



Deluxe Model 4 Electric

- Model 4 Tube Bender** (w/ hydraulic cylinder, no pump or hose) **\$1,045.00**
- Deluxe Model 4 Air/Hydraulic Tube Bender Kit** (includes bender, cylinder, hose, SPX PowerTeam air/hydraulic pump, and rolling pedestal w/ die rack) **\$1,714.00**
- Deluxe Model 4 Electric/Hydraulic Tube Bender Kit** (includes bender, cylinder, hose, 4000 psi electric/hydraulic pump w/ hand remote, and rolling pedestal w/ die rack) **\$2,149.00**

JD2 DIE SET CHART

ROUND TUBE DIE SETS			
OD	Min. Wall	Radius	Price
1/2"	.035"	2.25"	\$135
5/8"	.049"	2.25"	\$135
3/4"	.058"	2.25"	\$135
3/4"	.058"	3"	\$145
7/8"	.058"	3"	\$145
1"	.058"	3"	\$155
1"	.058"	3.5"	\$175
1"	.058"	4.5"	\$235
1-1/8"	.083"	3.5"	\$180
1-1/8"	.058"	4.5"	\$245
1-1/4"	.083"	3.5"	\$180
1-1/4"	.058"	4.5"	\$245
1-1/4"	.058"	5.5"	\$270
1-3/8"	.095"	4.5"	\$265
1-3/8"	.083"	5.5"	\$280
1-3/8"	.058"	6.5"	\$290
1-1/2"	.095"	4.5"	\$265
1-1/2"	.083"	5.5"	\$280
1-1/2"	.065"	6.5"	\$290

ROUND TUBE DIE SETS (cont.)			
OD	Min. Wall	Radius	Price
1-5/8"	.083"	5.5"	\$290
1-5/8"	.083"	6.5"	\$300
1-3/4"	.095"	5.5"	\$300
1-3/4"	.083"	6.5"	\$315
1-7/8"	.095"	6.5"	\$345
2"	.095"	6.5"	\$345
2-1/4"	.120"	6.5"	\$425
2-1/2"	.120"	6.5"	\$475

SQUARE TUBE DIE SETS			
Size	Min. Wall	Radius	Price
1/2"	.065"	3"	\$160
1/2"	.049"	4.5"	\$225
3/4"	.065"	3"	\$165
3/4"	.065"	3.5"	\$190
3/4"	.058"	4.5"	\$265
1"	.083"	3.5"	\$195
1"	.065"	4.5"	\$280
1-1/4"	.065"	4.5"	\$285

SQUARE TUBE DIE SETS (cont.)			
Size	Min. Wall	Radius	Price
1-1/4"	.065"	5.5"	\$300
1-1/2"	.083"	5.5"	\$320
1-1/2"	.065"	6.5"	\$335

Nominal PIPE DIE SETS			
Pipe Size	OD	Radius	Price
1/2"	.840"	3"	\$150
3/4"	1.050"	3"	\$155
3/4"		4.5"	\$240
1"	1.315"	3.5"	\$185
1"		4.5"	\$250
1-1/4"	1.660"	4.5"	\$285
1-1/4"		5.5"	\$290
1-1/4"		6.5"	\$305
1-1/2"	1.900"	5.5"	\$330
1-1/2"		6.5"	\$345
2"		6.5"	\$450

RDB-125 TUBING BENDER

The RDB 125 tubing and pipe bender is the newest machine in the Baileigh/RMD lineup. This bender features big capacity for the money, it is able to bend 2.5" round tube or 2" schedule 40 pipe. Using a single hydraulic cylinder, the machine is capable of 180 degrees of bend without any repositioning of the tooling. The cylinder can be reset and restroked by using the foot pedal control. It also features a quick release counterbend die for easy positioning/removal of the tubing. Using industrial grade hydraulics and heavy steel construction, this machine is built to withstand tough industrial jobs.

- 180 degree capable (multiple strokes of cylinder)
- 2-1/2" round .125" wall mild steel capacity
- 2" schedule 40 pipe capacity
- 2" round .120" wall chrome moly capacity
- 2" square .125" wall mild steel capacity
- 7" CLR maximum
- 110v
- Made in the U.S.A.



RDB-125 Bender (110v) **\$4,195.00**

RDB-175 TUBING BENDER



The RDB 175 tube and pipe bender has a one bend-angle control that can bend up to 2-1/2" tubing and 2" schedule 40 pipe. The large 9" Center Line Radius (CLR) maximum accommodates a wide variety of bending applications.

This rotary draw tube bender can bend 180° in 30 seconds and returns in only 12 seconds! Complex serpentine bends can be done with ease. A quick counter die release allows for easy removal of bends, and is adjustable in 1/4" increments for easy tool changeovers.

- 180 degrees in one shot
- Quick adjust counter bend die
- Industrial hydraulic cylinders
- 2-1/2" round .125" wall mild steel capacity
- 2" schedule 40 pipe capacity
- 2" round .120" wall chrome moly capacity
- 2" square .125" wall mild steel capacity
- 9" CLR maximum
- No tooling required to change forming and pressure dies
- Bends pipe, round & square tubing
- On casters for portability
- 110v
- Made in the U.S.A.

RDB-175 Bender (110v) **\$7,195.00**
RT-1B Tubing Kit (OD) Save \$371! (includes 3/4" x 2.5R, 7/8" x 3R, 1" x 3R, 1-1/4" x 4R, and 1-1/2" x 5R) **\$2,495.00**
Racer's Tubing Kit (OD) Save \$360! (includes 1" x 3R, 1-1/4" x 4R, 1-1/2" x 5R, 1-5/8" x 6R, and 1-3/4" x 7R) **\$3,450.00**
RP-1B Pipe Kit (Nominal Pipe size) Save \$260! (includes 1/2" x 2.5R, 3/4" x 3R, 1" x 3R, 1-1/4" x 4R, 1-1/2" x 5R) **\$2,478.00**
Handrail Kit (Nominal Pipe size) Save \$125! (includes 1-1/4" x 3R, 1-1/2" x 3.75R) **\$968.00**
ST-1B Square Kit (OD) Save \$463! (includes 1/2" x 3R, 3/4" x 3.5R, 1" x 4.5R, 1-1/4" x 5.5R, and 1-1/2" x 6.5R) **\$4,305.00**

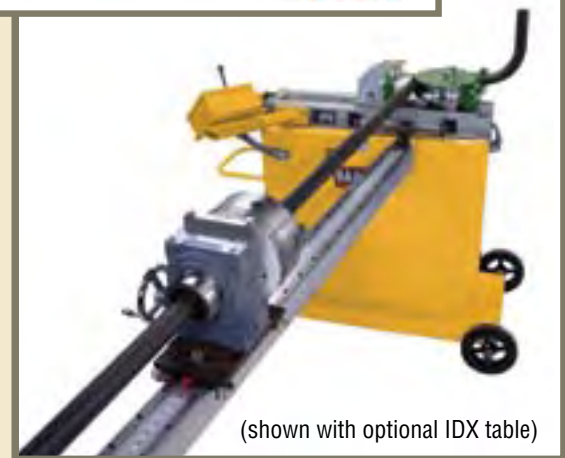
RDB-250 TUBING BENDER

The RDB-250 tubing bender is a programmable control machine that can bend up to 2-1/2" tubing and 2" schedule 40 pipe. The touch screen control allows up to 170 programs with 10 bends per program. Optional indexing tables give repeatability for both rotation points and length measurements between bends. Tables up to 20' long are available.

This rotary draw tube bender can bend at speeds up to 9 seconds for a 180° bend and can be programmed to bend up to 360°, great for solid rod applications. Complex serpentine bends can be done with ease. A quick counter die release allows for easy removal of bends.

The counter die positioner has a numerical counter so repositioning of the counter die is a breeze when recalling bend programs. Engaging bends is as simple as pressing the forward foot pedal, and reverse pedal when complete.

- 180 degrees in one shot
- 2-1/2" OD .125" wall mild steel capacity
- 2" schedule 40 pipe capacity
- 2" square .125" wall mild steel capacity
- 170 program touch screen control standard
- 9" CLR maximum
- Optional positioning table
- No tools required for die changes
- Bends pipe, round & square tubing
- On casters for portability
- 220v 1 ph
- Made in the U.S.A.



(shown with optional IDX table)

RDB-250 Bender (220v 1 ph)	\$9,995.00
10' Indexing Table (5' to 20' lengths available)	\$4,095.00
RT-1B Tubing Kit (OD) Save \$371! (includes 3/4" x 2.5R, 7/8" x 3R, 1" x 3R, 1-1/4" x 4R, and 1-1/2" x 5R)	\$2,495.00
Racer's Tubing Kit (OD) Save \$360! (includes 1" x 3R, 1-1/4" x 4R, 1-1/2" x 5R, 1-5/8" x 6R, and 1-3/4" x 7R)	\$3,375.00
RP-1B Pipe Kit (Nominal Pipe size) Save \$260! (includes 1/2" x 2.5R, 3/4" x 3R, 1" x 3R, 1-1/4" x 4R, 1-1/2" x 5R)	\$2,478.00
Handrail Kit (Nominal Pipe size) Save \$125! (includes 1-1/4" x 3R, 1-1/2" x 3.75R)	\$968.00
ST-1B Square Kit (OD) Save \$463! (includes 1/2" x 3R, 3/4" x 3.5R, 1" x 4.5R, 1-1/4" x 5.5R, and 1-1/2" x 6.5R)	\$4,305.00

MANUAL ROLL BENDER



This manual roll bender by Pro Tools is capable of rolling tube, pipe, channel, flats, and various box tubing. The unit's small size makes it highly portable and versatile. Top roll position is adjusted by means of a lever handle and the lower rolls are fixed. Bottom rolls can be dropped in quickly, and the top roll is fixed in place using the keyed shaft on the handle. With its sturdy dual side plate design, this machine can handle surprisingly large material for large radius work. (Not for rolling circles.) Excellent machine for the ornamental, racing, and handrail industry with die sets available for up to 2" OD.

M3RB Manual Roll Bender (includes one roll of your choice)	\$1,195.00
Additional Roll Sets	\$295.00

EAGLE ROLL BENDING MACHINES



CP20

These machines are used for bending tube, angle, or shapes into coils, circles or large arcs using a wide variety of materials. Simply adjusting the third roll changes the size of the arc or circle. A digital read out allows repeatability for production runs. Machines come complete with a universal roll set. Tube sizes require specific rolls for each OD. We have rolls for any application including CNC controlled. Please call for special applications.

- Lower rolls knurled for optimal traction
- Manual or hydraulic adjustment of top roll
- Rugged frame and heavy duty wide base
- Hardened steel shafts
- Horizontal or vertical operation options
- Drive components supported in roller bearings
- Heavy duty adjustable lateral material guides
- Compact, low maintenance design
- Hardened universal standard rolls
- Motor overload protection



CP30

Model	Display	Motor	Speed	Weight
CP20	LED	.44 hp	10	240 lbs.
CP30E	Scale	1.25 hp	9	450 lbs.
CP30	LED	1.25 hp	10.5	550 lbs.
Z402	LED	2.25 hp	14	870 lbs.
CP40	LED	2.5 hp	14	1400 lbs.

Capacity	Tube	Square	Solid	Angle
CP20	1-1/4" x .065"	3/4" x .065"	1/2"	3/4" x 1/8"
CP30E	2-3/8" x .065"	1-1/2" x .120"	1-1/4"	1-1/2" x 3/16"
CP30	2-3/8" x .065"	1-1/2" x .120"	1-1/4"	1-1/2" x 3/16"
Z402	2-3/4" x .065"	2" x .120"	1-1/4"	1-1/2" x 1/4"
CP40	2-3/4" x .083"	2" x .125"	1-3/8"	2" x 1/4"



CP40

- CP20 (bench top model, manual adjustment w/ LED, 220v 3 ph) **\$4,300.00**
- CPS20 (hydraulic positioning w/ LED, auto 9 position repeat, 220v 3 ph) **\$9,900.00**
- CP30E-PR (includes stand w/ horizontal/vertical operation, manual adjustment w/ scale, foot pedals, 220v 3 ph) **\$6,400.00**
- CP30E-PRM (includes stand w/ horizontal/vertical operation, manual adjustment w/ scale, foot pedals, 220v 1 ph) **\$6,400.00**
- CP30PR-2V (includes stand w/ horizontal/vertical operation, manual adjustment w/ LED, two speed, foot pedals, 220v 3 ph) **\$7,450.00**
- CP30-PRM (includes stand w/ horizontal/vertical operation, manual adjustment w/ LED, foot pedals, 220v 1 ph) **\$7,550.00**
- ZM-402 (manual adjustment w/ LED, foot pedal control, 220v 3 ph) **\$9,995.00**
- ZH-402 (hydraulic adjustment w/ LED, foot pedal control, 220v 3 ph) **\$10,995.00**
- CP40-M (manual adjustment w/ LED, foot pedal control, 220v 3 ph) **\$12,200.00**
- CP40-H2 (hydraulic adjustment w/ LED, foot pedal control, 220v 3 ph) **\$14,700.00**
- CP40-H (hydraulic adjustment w/ LED, 3 driven rolls, foot pedal control, 220v 3 ph) **\$17,000.00**

Larger Models Available • Call For Pricing

HAND BENDING MACHINE



Deluxe Hand Bender Kit



Introducing the HB1 Hand Bending Machine for up to 5/8" OD tubing. The HB1 features heavy duty steel construction for bending custom fuel, brake or hydraulic lines or even small diameter chassis tubing. Quick setup and simple operation make this bender the right choice for light production, repair, and prototype work. Each standard die set is reversible for bending three-times or five-times the diameter of the tube radii and the adjustable bend die allows for easy repositioning and removal of the tube. The HB1 hand bender produces quality bends in a variety of materials and wall thicknesses with the flexibility required for any project.

- Rugged CNC machined steel construction
- Replaceable parts for long service life
- 3D and 5D bends from each die set
- Adjustable bend die on lead screw
- Close bend-to-bend distances
- Simple set up and operation
- Pedestal or vice mount

Part Number	Description	Price
HB1KIT	Hand Bender Kit, includes bender and 5 die sets	\$699.98
DELUXE HB1KIT	Deluxe Hand Bender Kit, includes 5 die sets and pedestal w/ die rack	\$799.98
HB1	Hand Bender only	\$419.98
VS250	1/4" OD x .75" & 1.25" CLR die set	\$45.00
VS312	5/16" OD x .93" & 1.56" CLR die set	\$55.00
VS375	3/8" OD x 1.12" & 1.87" CLR die set	\$60.00
VS500	1/2" OD x 1.5" & 2.5" CLR die set	\$85.00
VS625	5/8" OD x 1.87" & 3.12" CLR die set	\$90.00



HUTH EXHAUST BENDER

The Huth line of tubing and pipe benders are built for day-in and day-out use. The HB-10 is the entry level machine fully equipped with tooling to bend up to 3" tubing and with a built-in swager/expander it can handle complete end-finishing. Many additional and/or custom tooling is available for unlimited automotive or industrial applications.

The 2600HD machine is an industrial duty ram bender, designed for heavy wall pipe and large square tubing applications. This machine will accept standard tooling and many available accessories.

- 220v 1 ph or 3 ph power options
- Available tooling packages
- Industrial quality
- Expander/Swager included



HB10 Bender with tooling package. **\$7,350.00**
 2600HD Industrial bender, less tooling. **\$9,950.00**

COMPACT MANDREL BENDERS

The K Series mandrel benders are designed for the custom exhaust market and built with space in mind. These portable machines offer hydraulic muscle with digital accuracy offering a tolerance of +/- .1 degree. With capacity up to 4 inch stainless and bend radii as tight as 1.5 x diameter in their standard configuration, these machines are as versatile as they are economical. Optional accessories include mandrel lubrication, length and rotational stops with the Plane of Bend device, and 500 part storage with the SPS touch screen control. We also offer a new following pressure die option for even tighter bend to bend distances or tighter CLR's. Please call our expert sales staff with all of your bending needs.

2060K



- Mild steel tubing from 1/4" to 3", maximum wall thickness 0.109"
- Stainless steel tubing from 1/4" to 3", maximum wall thickness 0.065"
- Bending angle up to 180.0 plus 10.0 springback
- Bending head speed 0.0–90.0: 8 seconds
- Standard load length 10' (extensions available)
- Maximum centerline radius 6" (extensions available)
- Minimum centerline radius 1.5D (optional boosted pressure die for <1.5D)
- Manual or semi automatic operation (with optional SPS control)
- Removable shaft for small bend radius
- Made in Germany
- Machine weight: approx. 2,200 lbs.
- Prices start at \$48,412.00

- Mild steel tubing from 1/4" to 4", maximum wall thickness 0.134"
- Stainless steel tubing from 1/4" to 4", maximum wall thickness 0.078"
- Bending angle up to 180.0 plus 10.0 springback
- Bending head speed 0.0–90.0: 9 seconds
- Standard load length 10'
- Maximum centerline radius 8"
- Minimum centerline radius 1.5D (optional boosted pressure die for <1.5D)
- Manual or semi automatic operation (with optional SPS control)
- Removable shaft for small bend radius
- Made in Germany
- Machine weight: approx. 5,500 lbs.
- Prices start at \$93,145.00

20101K



OPTIONAL ACCESSORIES



Mandrel Tooling



Plane of Bend Device



SPS Control



Mandrel Lubrication



CNC PLASMA SYSTEMS

TORCHMATE PLASMA TABLE

NEW!

The Torchmate 2'x2' & 2'x4' CNC plasma tables are designed to bring CNC cutting capabilities to garage enthusiasts, schools, or small fabrication shops. With a small footprint, the system brings CNC technology down to a size that will fit in most any environment. The system is compatible with most plasma cutters and the driver software will accept any .dxf file or G-code. With a cutting rate of up to 150 ipm and a resolution of approximately .0006" the Torchmate system delivers speed and accuracy previously available to only the largest fabrication shops. Simply add your plasma cutter and computer and start cutting!

Torchmate also offers its CAD Lite design software capable of laying out shapes for cutting and exporting the files to the driver software. A water table is available to trap dust and sparks created during the cutting process. Finally, the Torchmate system can also be used for more than just plasma cutting. Secondary tooling can be mounted for CNC routing, drilling, milling, and even engraving.

Torchmate System Specifications

- Footprint: 39"x 39" (2'x2') & 39" x 63" (2'x4')
- 2 x-axis drive motors and 1 y-axis drive motor
- 2 amp micro-stepping stepper motors
- PC based controls with USB interface
- 5 piece fabricated steel construction
- 110v 15 amp power
- Available with or without water table
- Available with or without Torchmate CADLite design software



2' x 4'



2' x 2'

Capabilities

- 2' x 2' or 2' x 4' cutting area
- 13" cutting depth (tool dependent)
- 150 ipm cut speed, 200 ipm traverse speed
- Approximately .0006" resolution

Computer Requirements

- Windows XP / Vista / Windows 7
- 1 GB processor
- 1 GB ram
- 30 GB hard drive

Torchmate 2'x2' CNC Plasma Deluxe Kit \$4,230.00

(Includes: 2'x2' CNC Plasma System, 2'x2' Water Table, CADLite design module, and Hand Torch Holder)
Just add plasma and computer!

Torchmate 2'x2' CNC Plasma System \$2,995.00

(Includes: gantry, 2 sides, extruded aluminum rails, hardware, tool mounting bracket, electronics box, motor cables, USB cable, and power cable, and driver software with instructions) Requires torch holder.

Torchmate 2'x4' CNC Plasma Deluxe Kit \$5,730.00

(Includes: 2'x4' CNC Plasma System, 2'x4' Water Table, CADLite design module, and Hand Torch Holder)
Just add plasma and computer!

Torchmate 2'x4' CNC Plasma System \$3,995.00

(Includes: gantry, 2 sides, extruded aluminum rails, hardware, tool mounting bracket, electronics box, motor cables, USB cable, and power cable, and driver software with instructions) Requires torch holder.

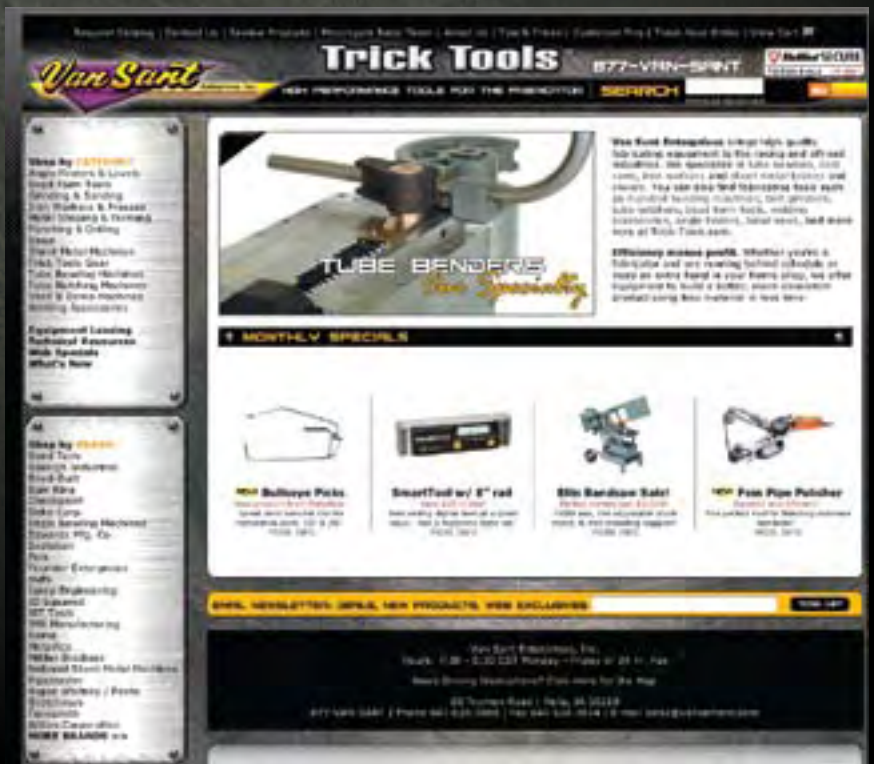
Van Sant Enterprises, Inc.
80 Truman Road
Pella, IA 50219

WWW.TRICK-TOOLS.COM

1-877-VAN-SANT

Scan The Code

If you have an Apple iPhone or any Android smart phone and want to have instant access to additional information and videos on the products you see in our catalog, simply scan the code listed next to the product. You'll need to download a free app such as a barcode scanner or QR code scanner from the iTunes App Store or Android Market.



Follow Us



- Expert technical advice
- Highest quality tools
- Competitive prices
- Widest product selection

